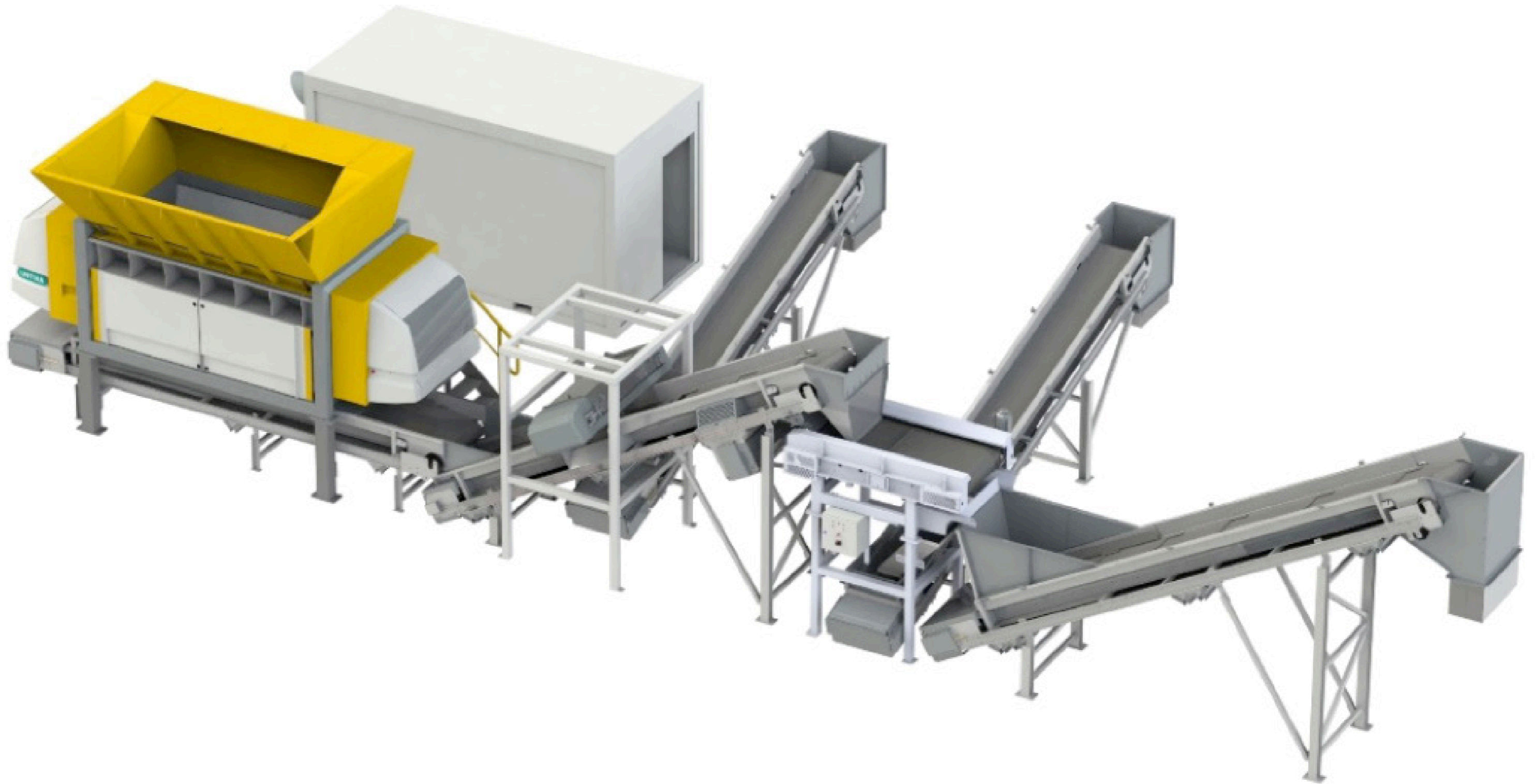


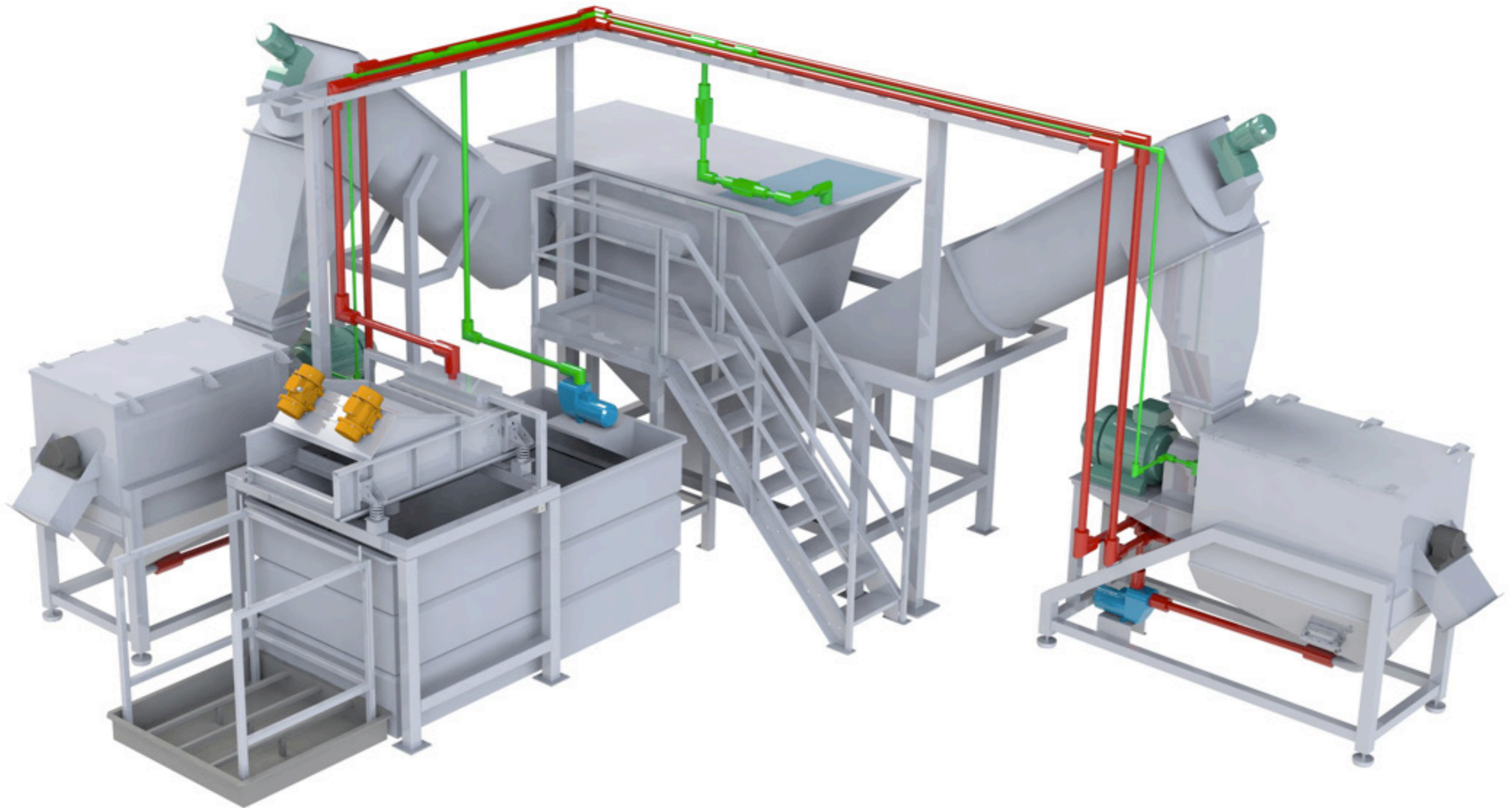


Recycling plans
and sections

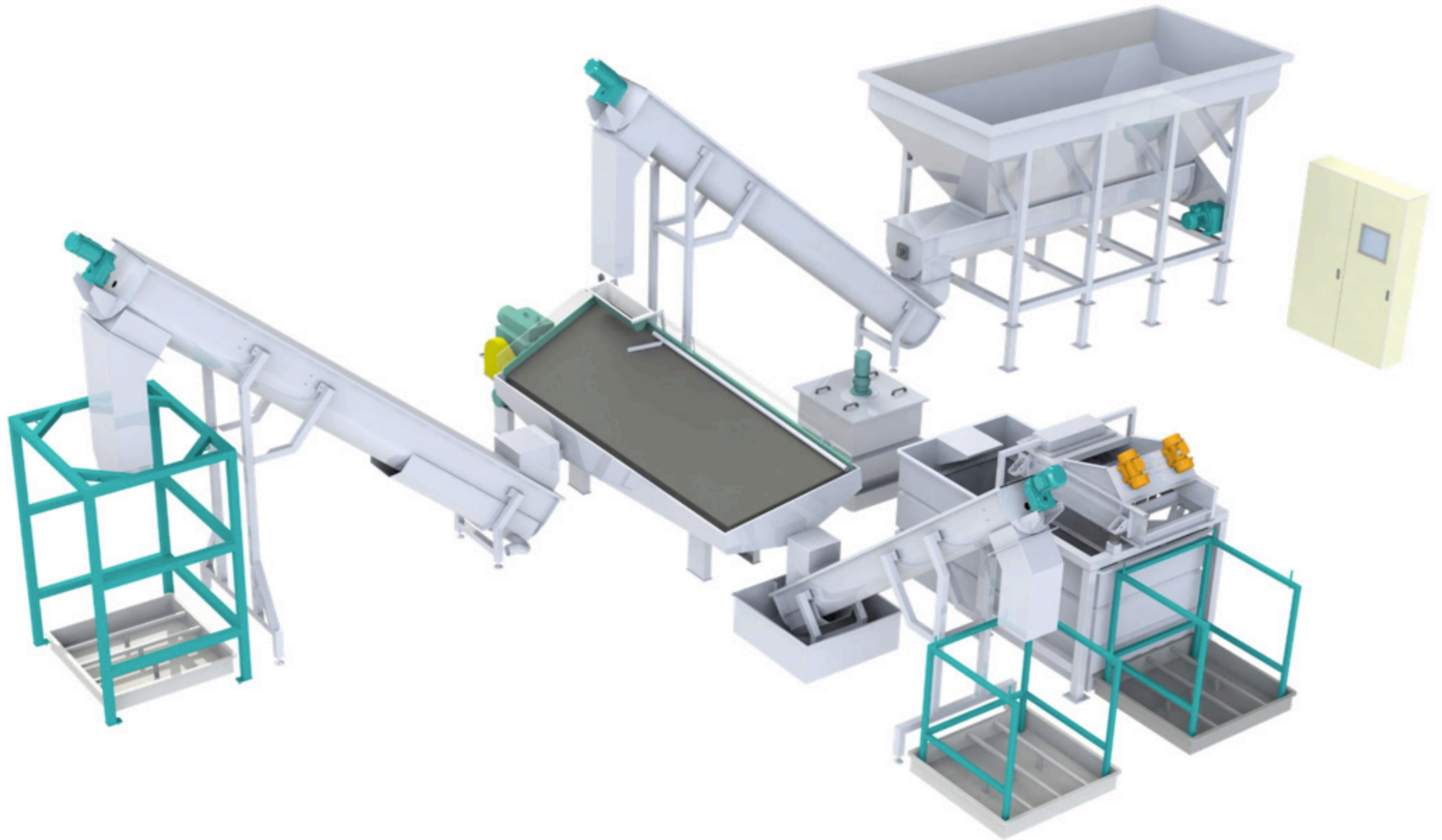




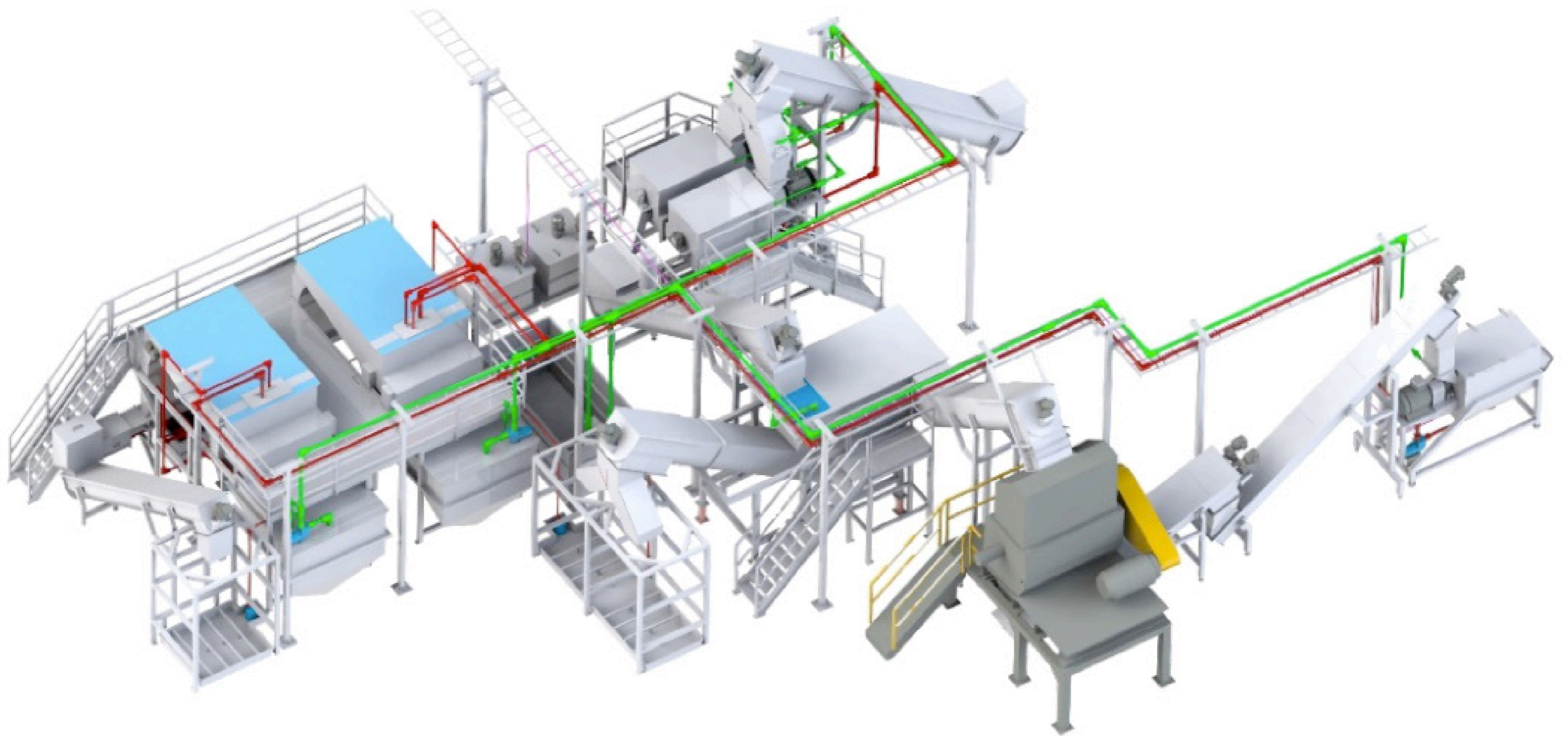
Grinder Section



Sink Float Section

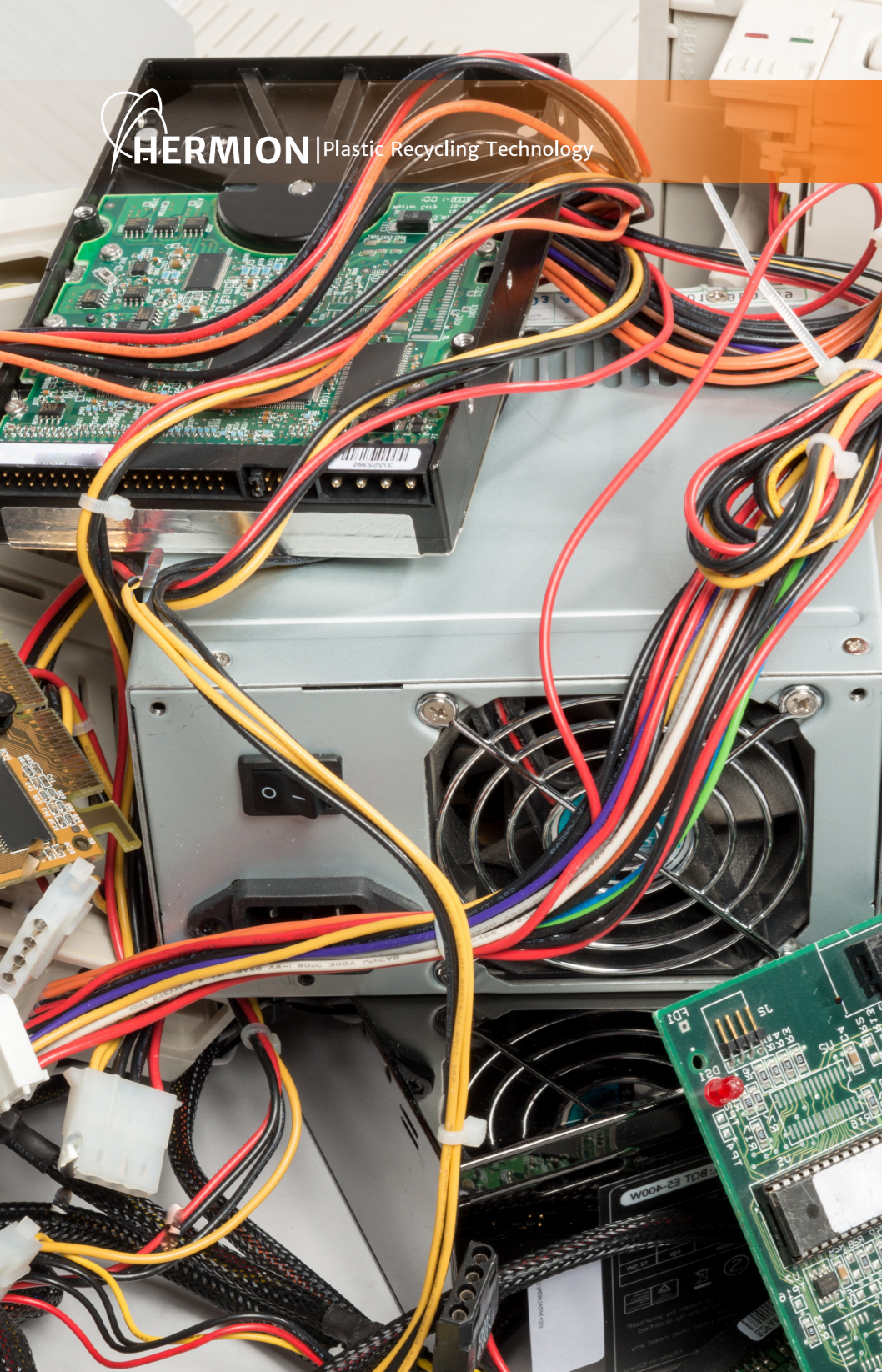


Water Table Section

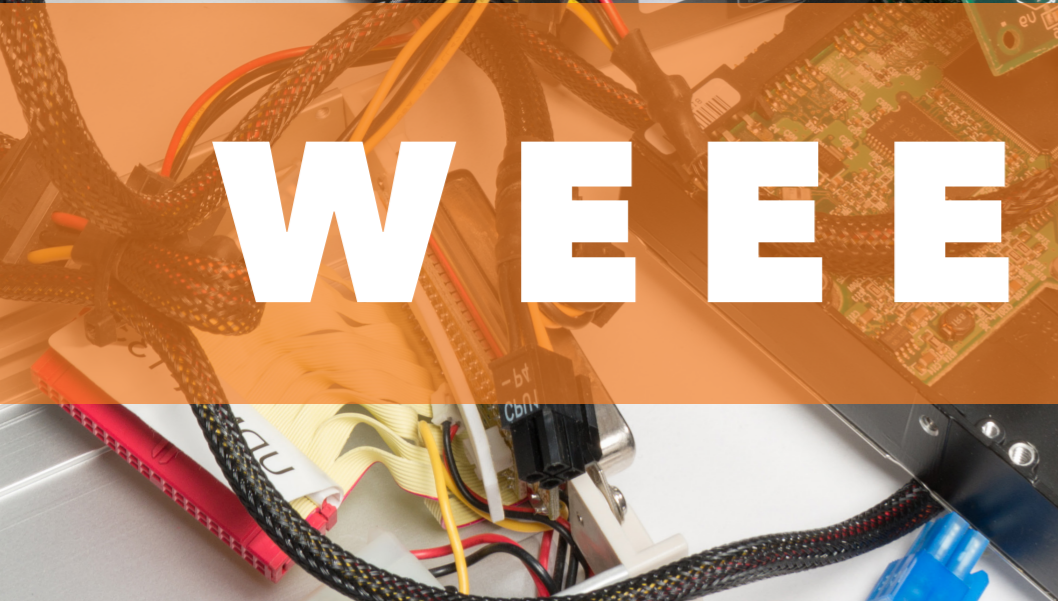


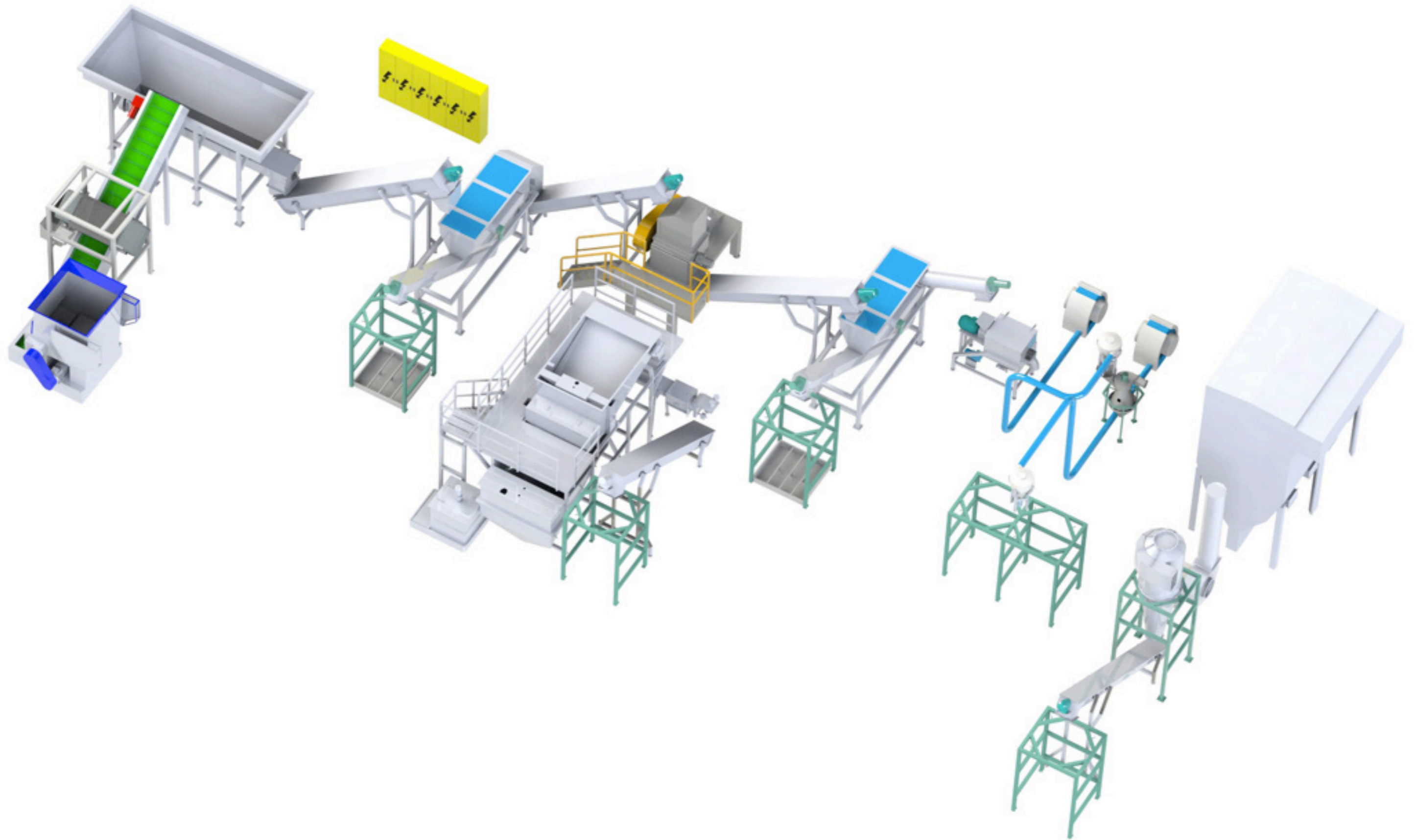
Water Treatment Section

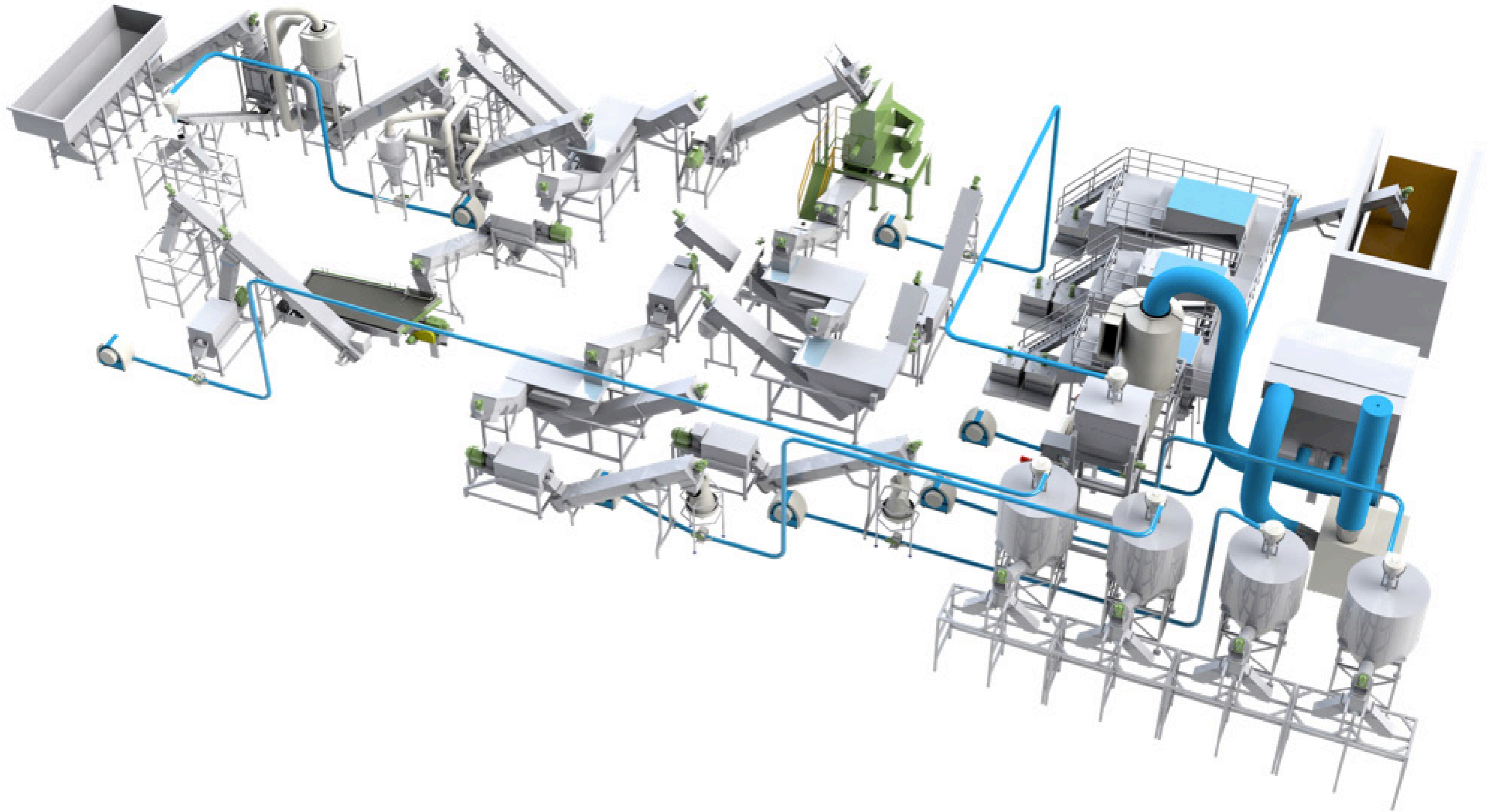


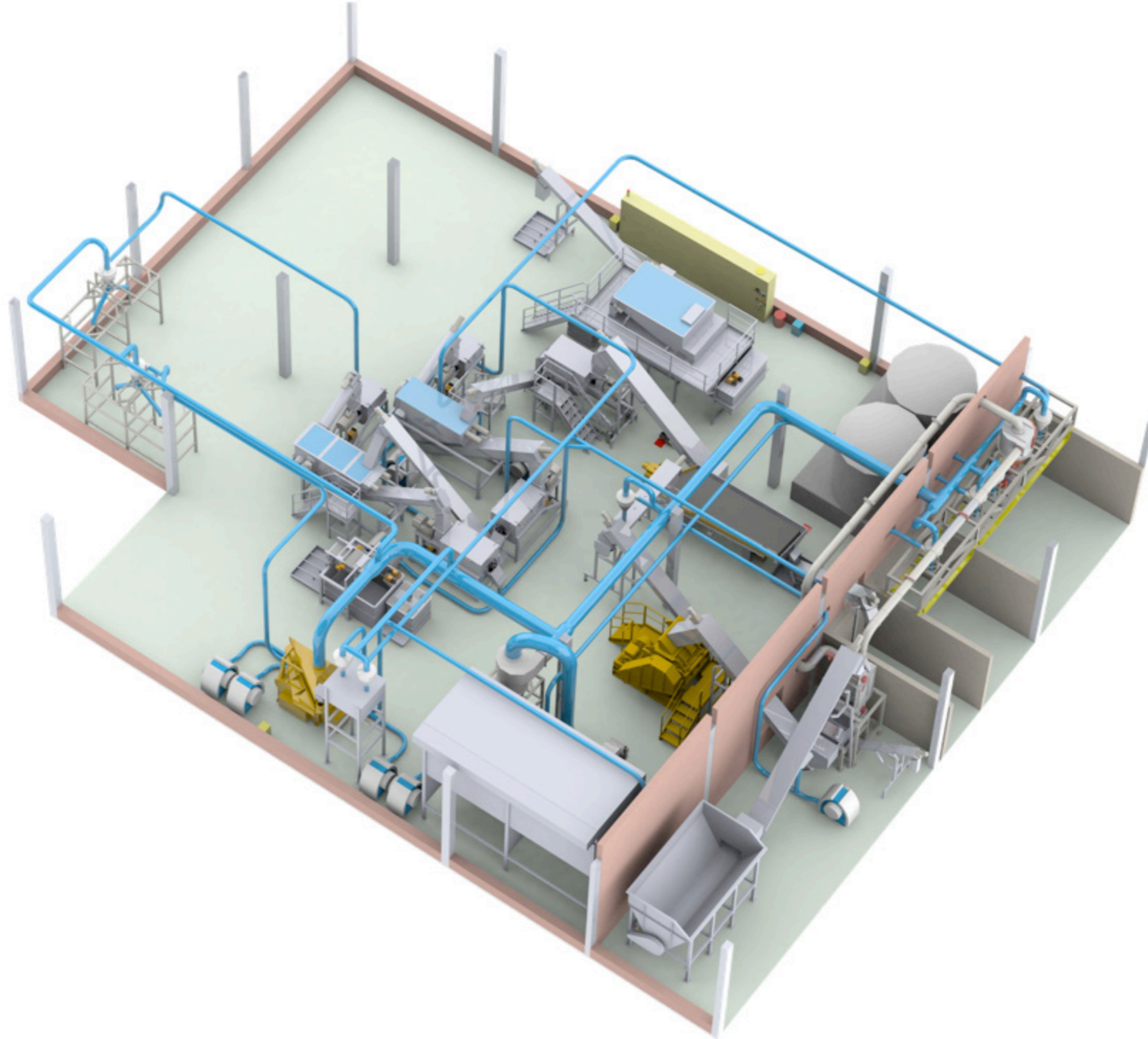


WEEE / CAR / CABLE

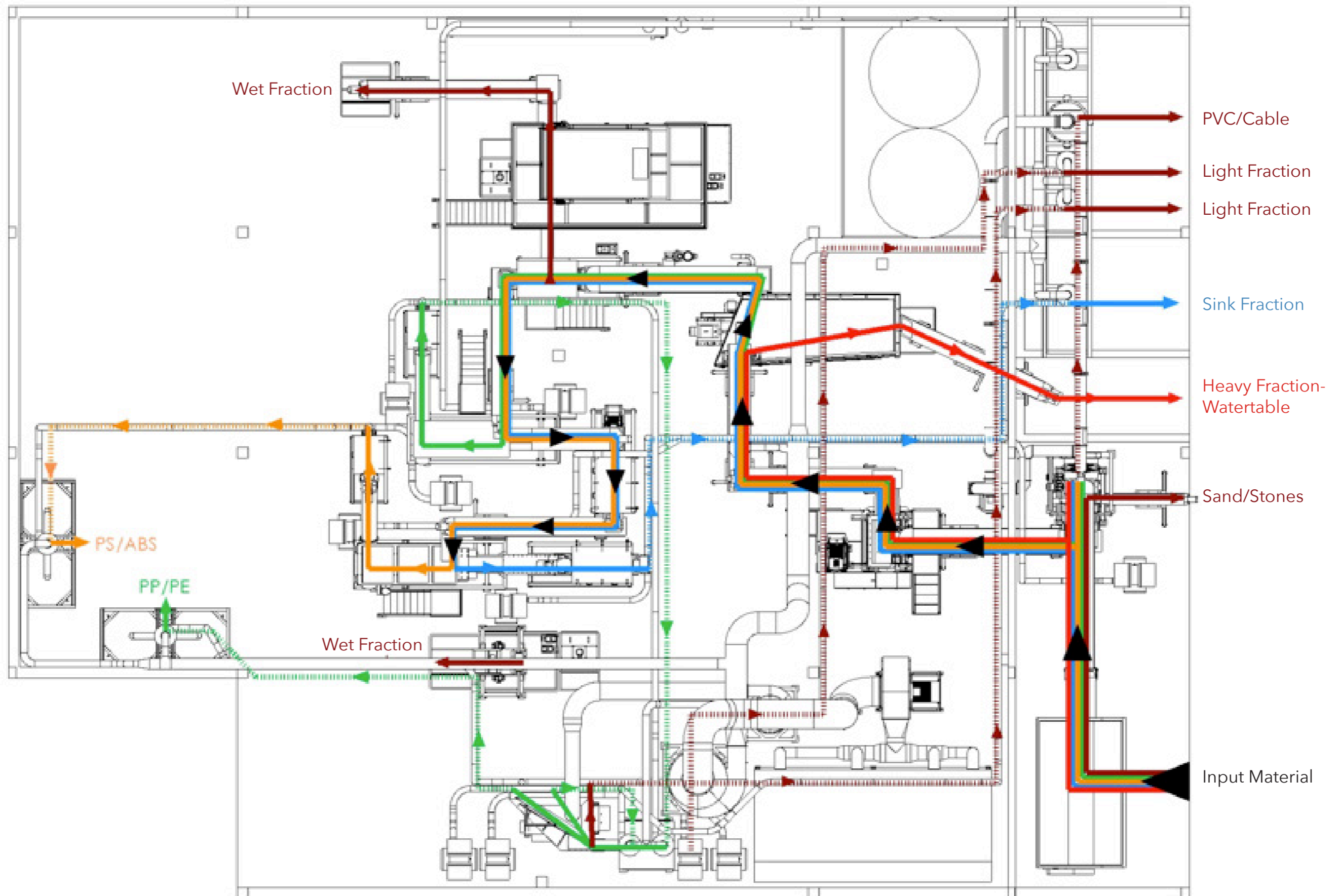








Combined recycling line: WEEE/CAR/CABLE plant: 2,5 ton/hour



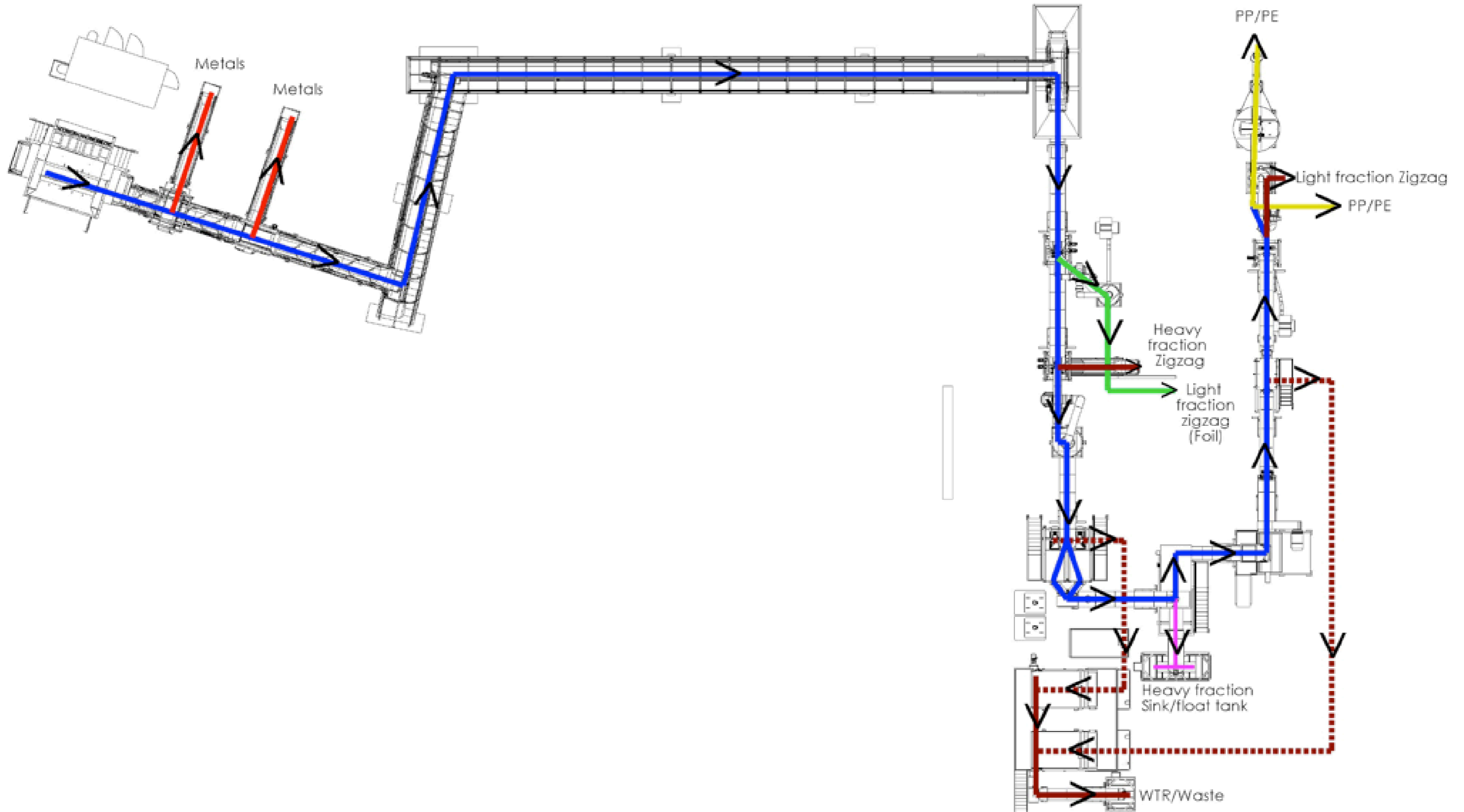
Combined recycling line: WEEE/CAR/CABLE plant: 2,5 ton/hour



Mixed Plastic



Mixed Plastic plant: 5 ton/hour



Mixed Plastic plant: 5 ton/hour

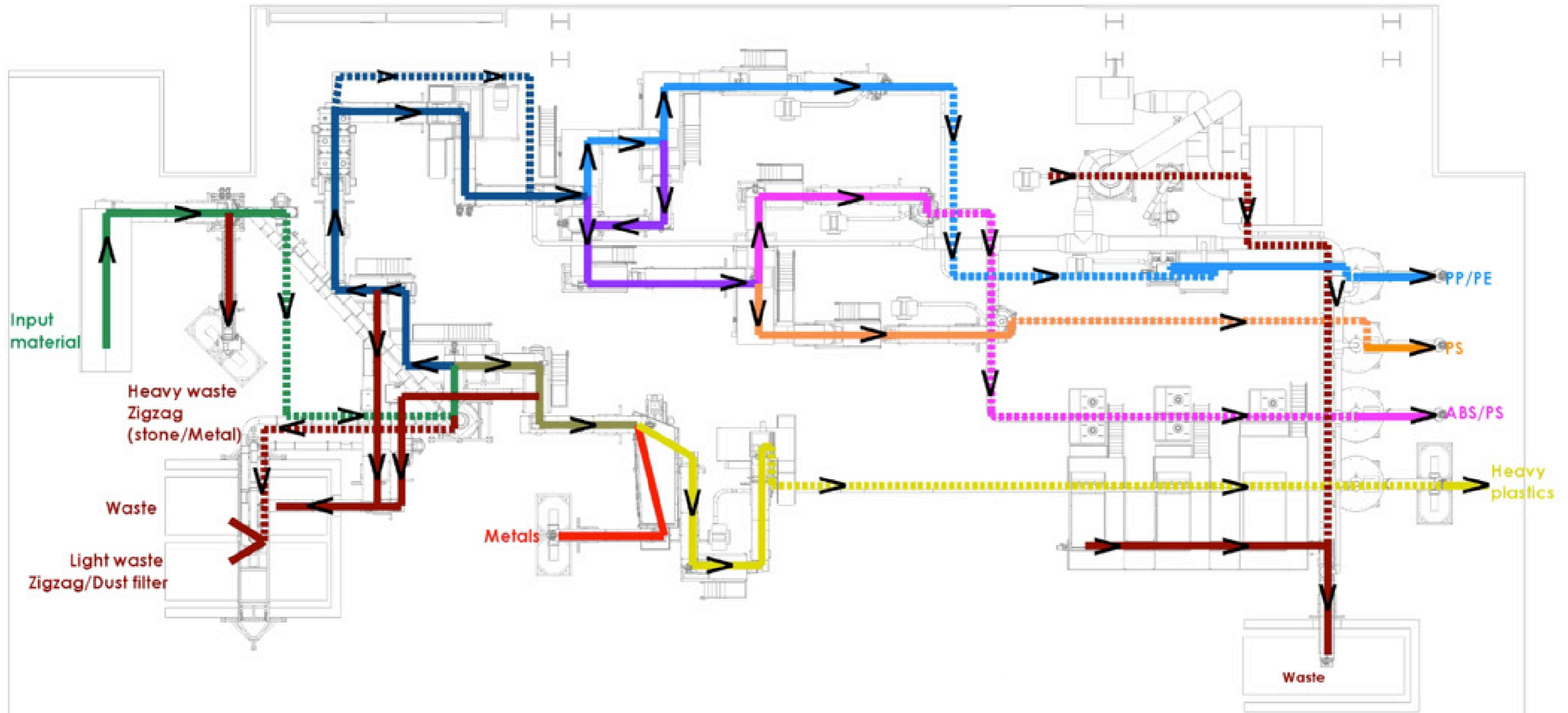


WEEE / SDA / FRIDGE

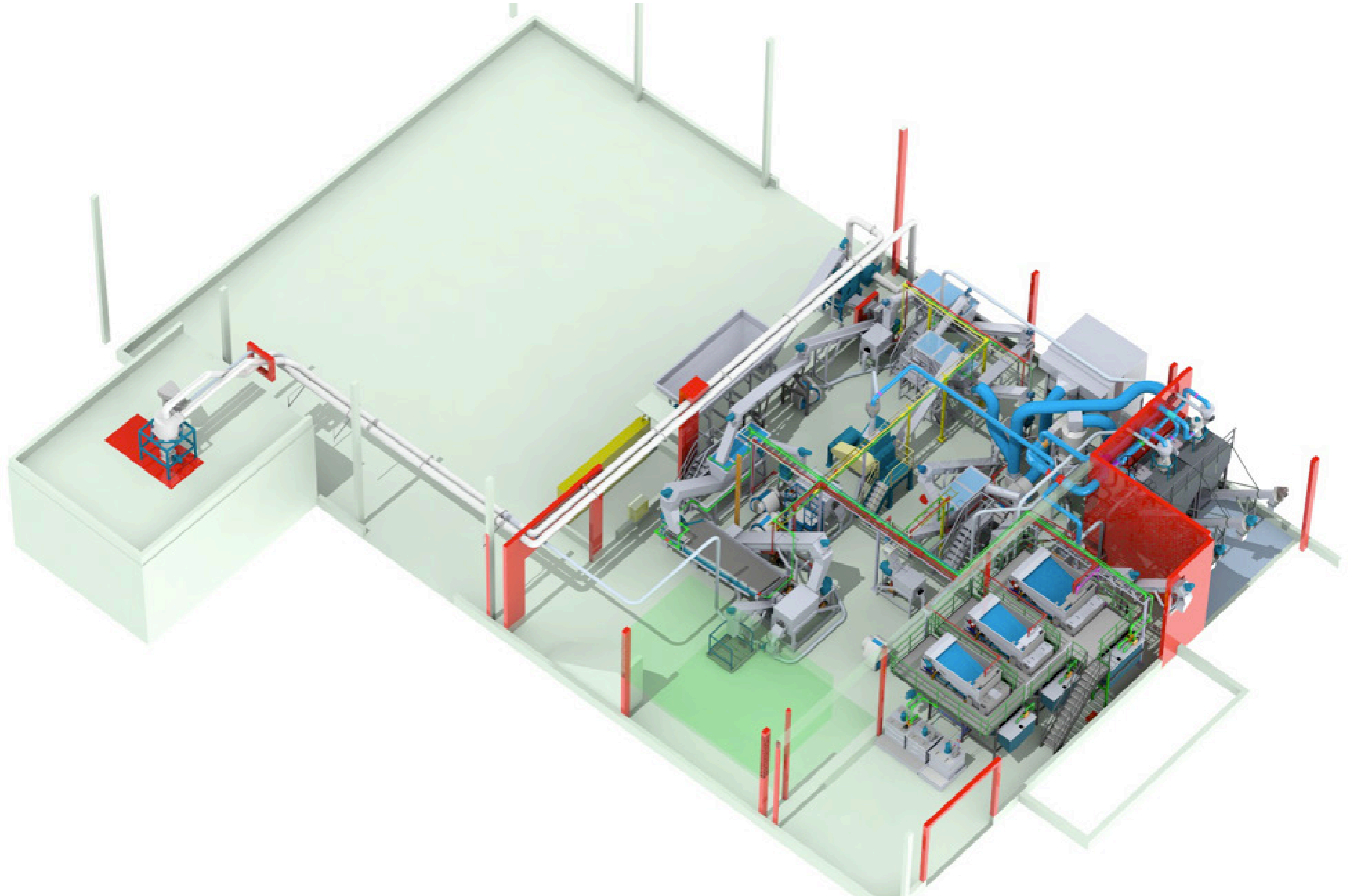




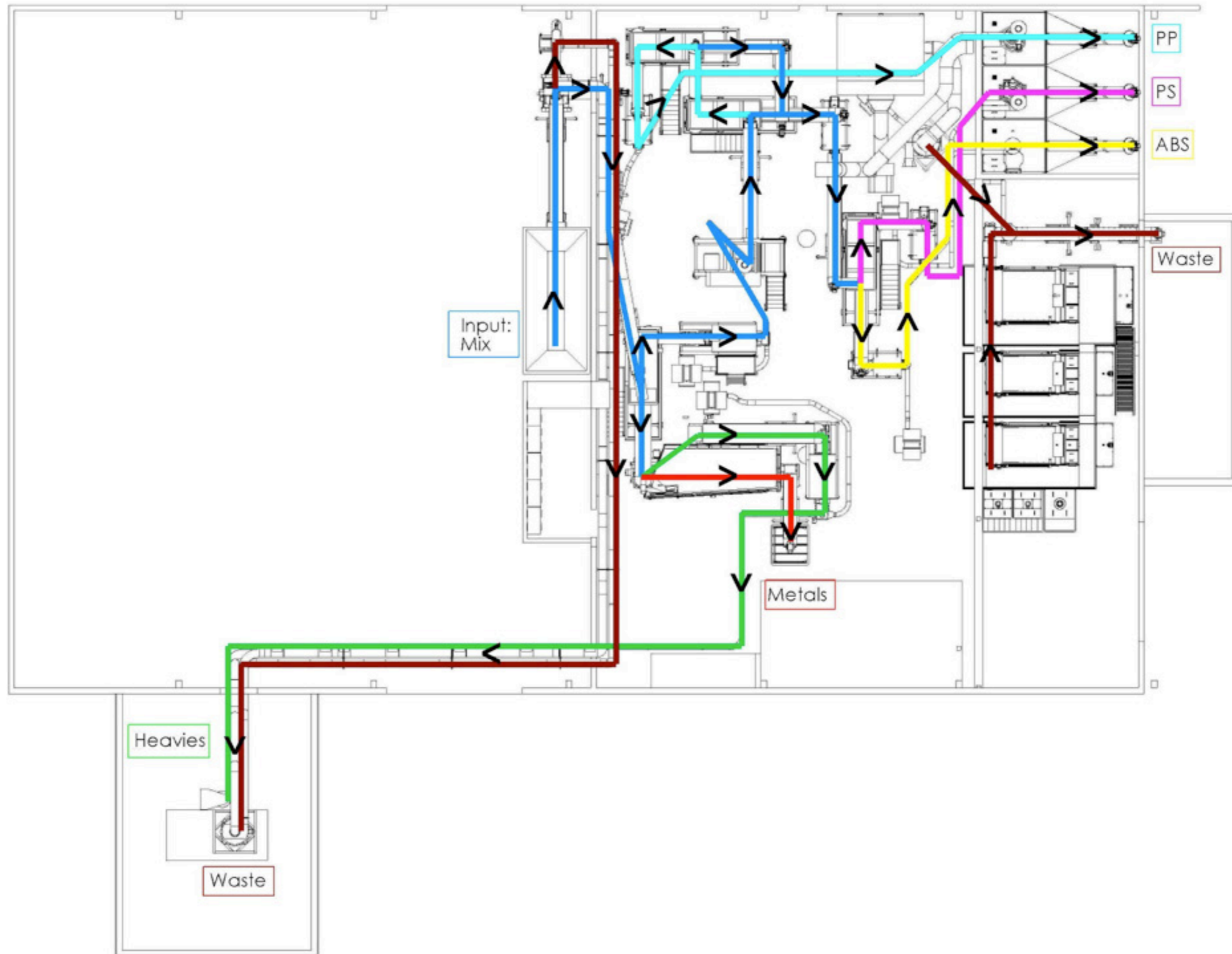
WEEE/SDA/FRIDGE: 5 ton/hour



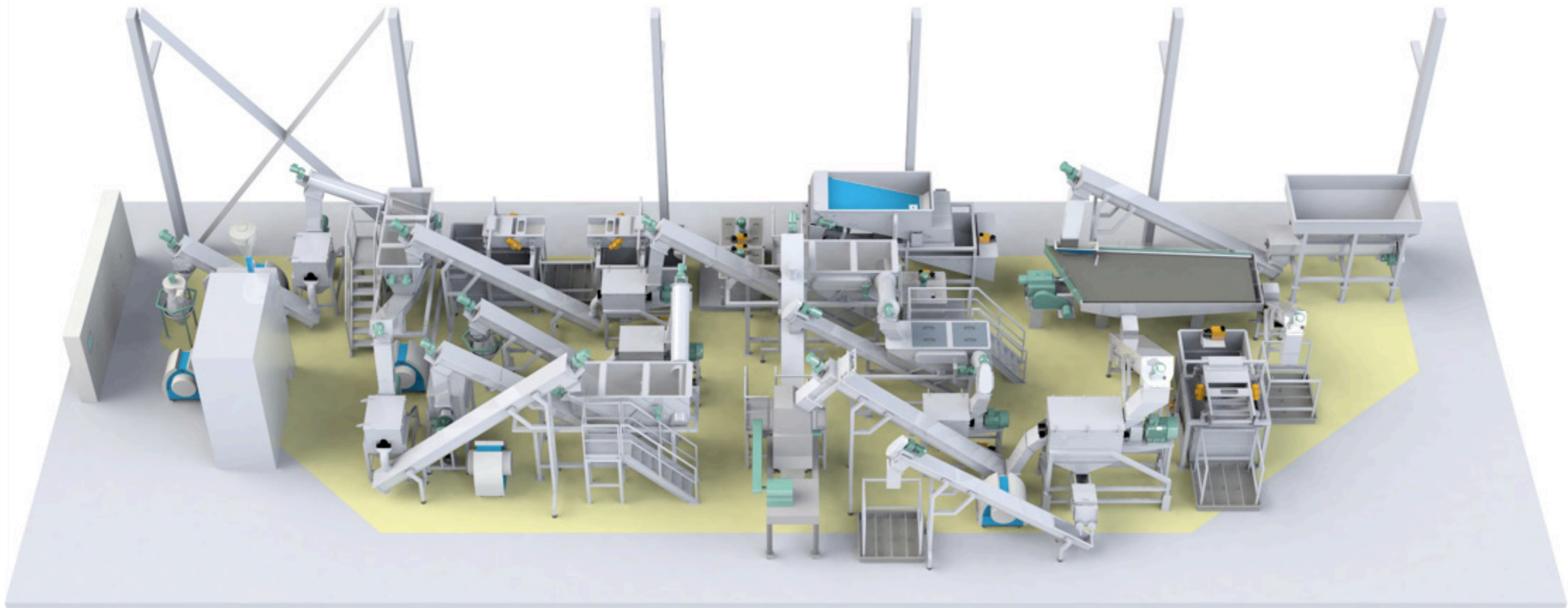
WEEE/SDA/FRIDGE: 5 ton/hour



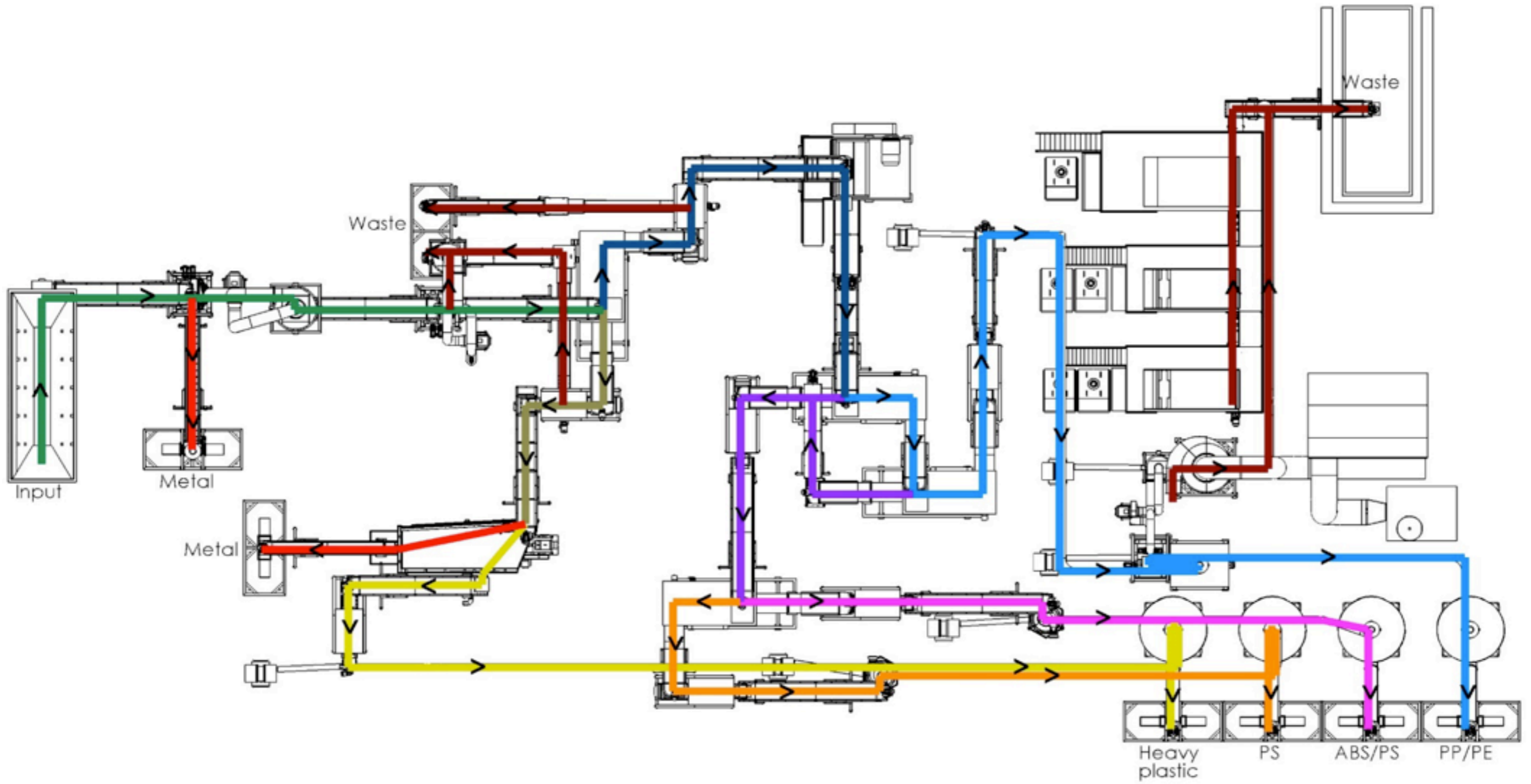
WEEE/SDA/FRIDGE: 3 ton/hour



WEEE/SDA/FRIDGE: 3 ton/hour

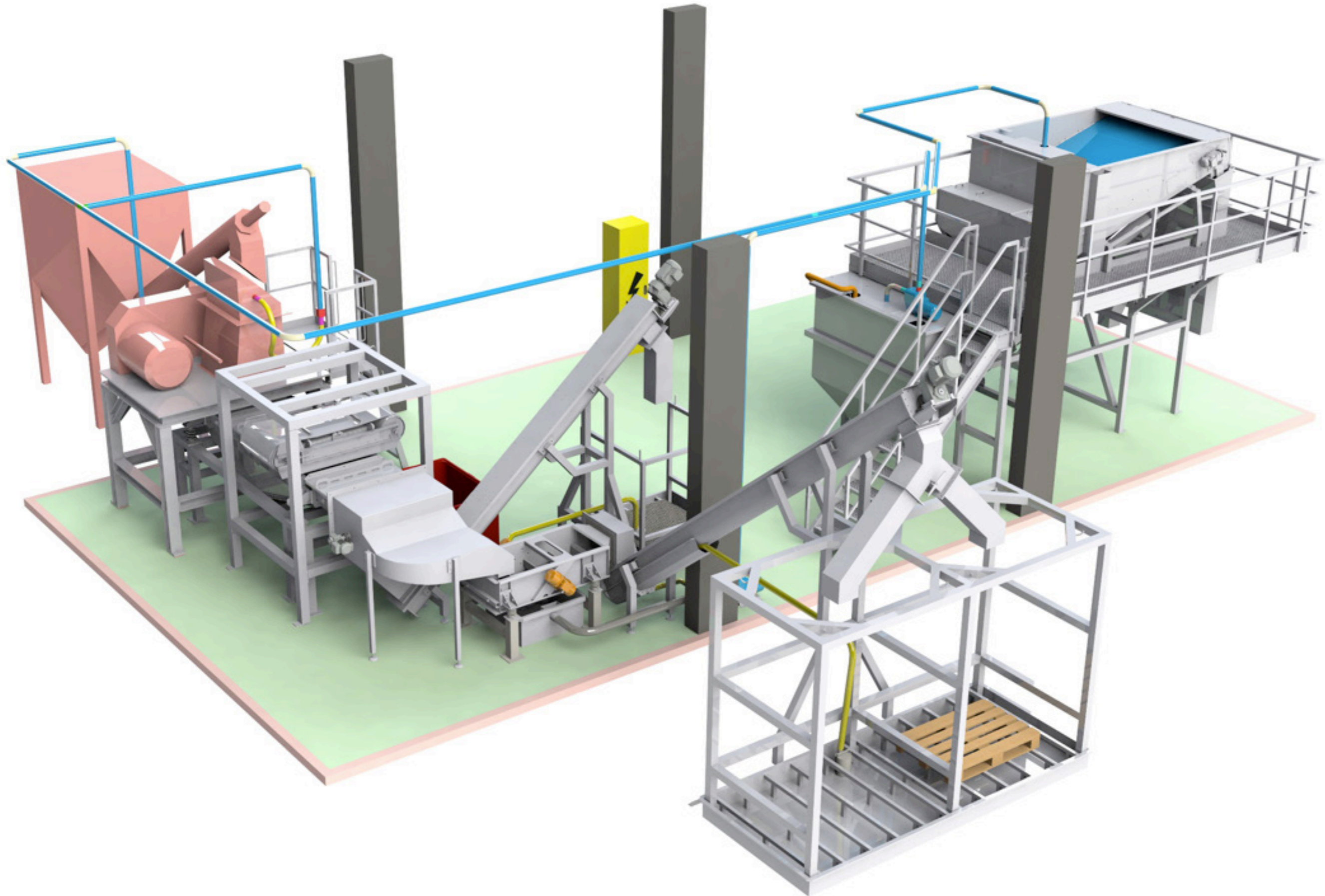


WEEE/SDA/FRIDGE: 2 ton/hour

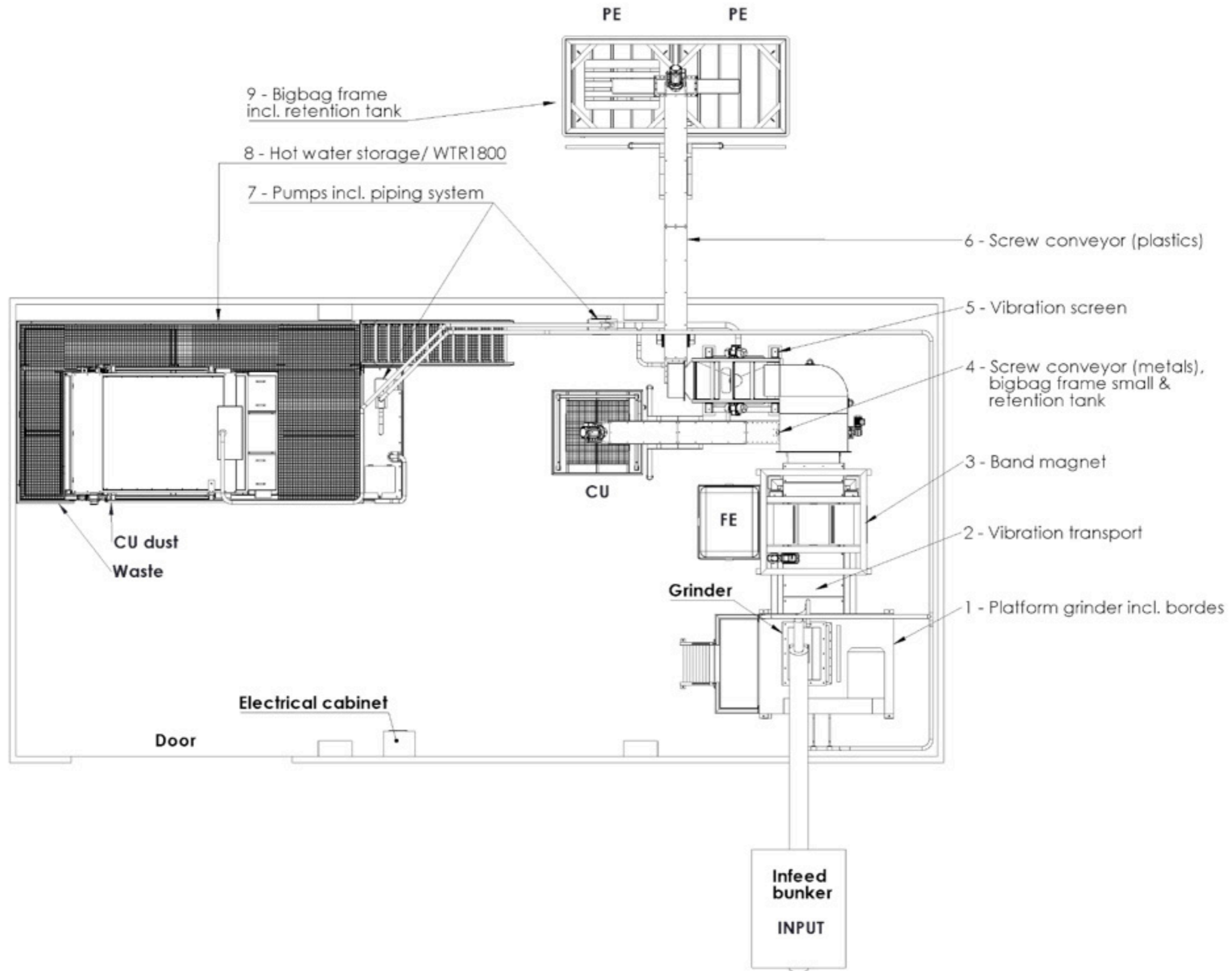


WEEE/SDA/FRIDGE: 2 ton/hour

Jelly Cable

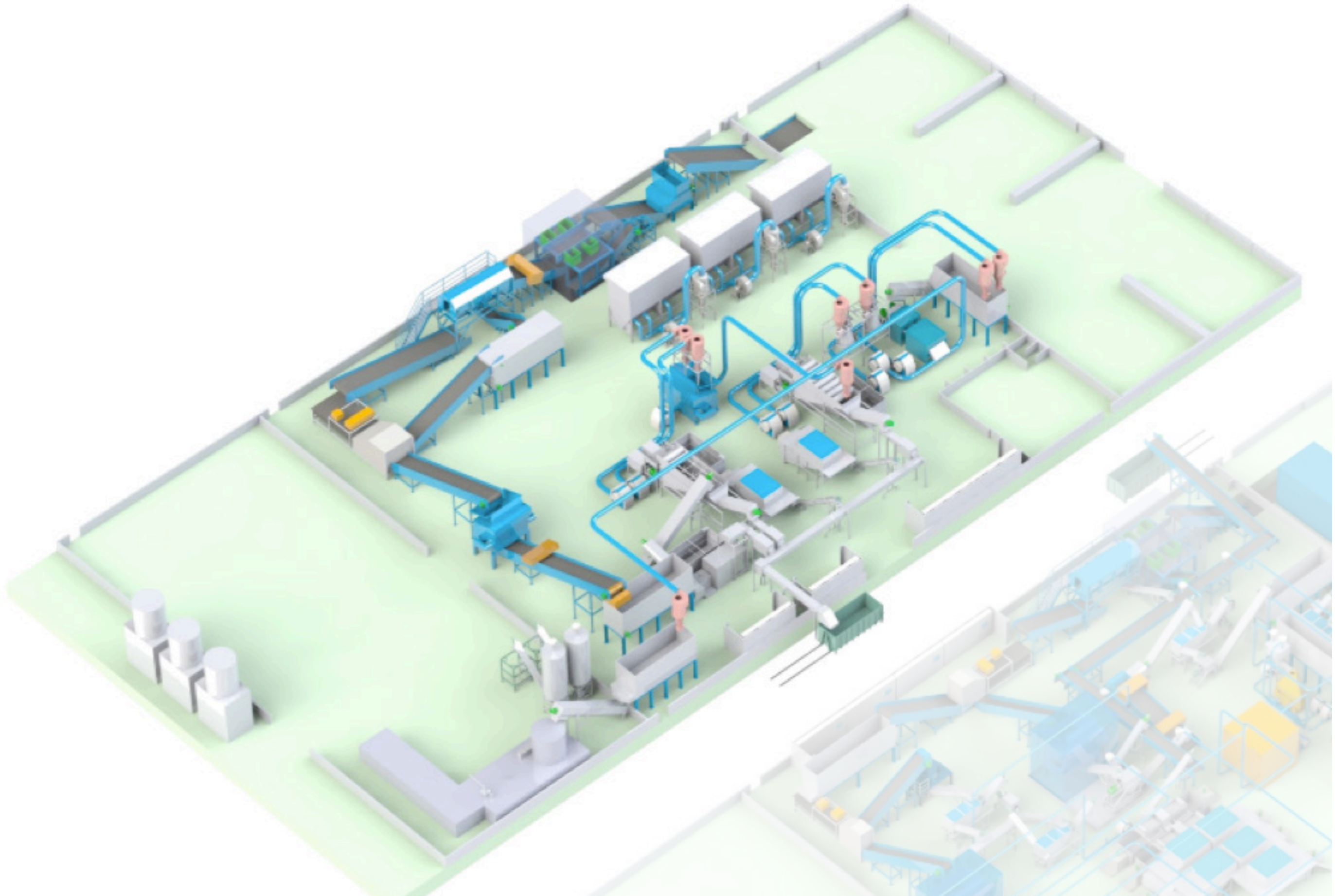


Jelly Cable: 1 ton/hour

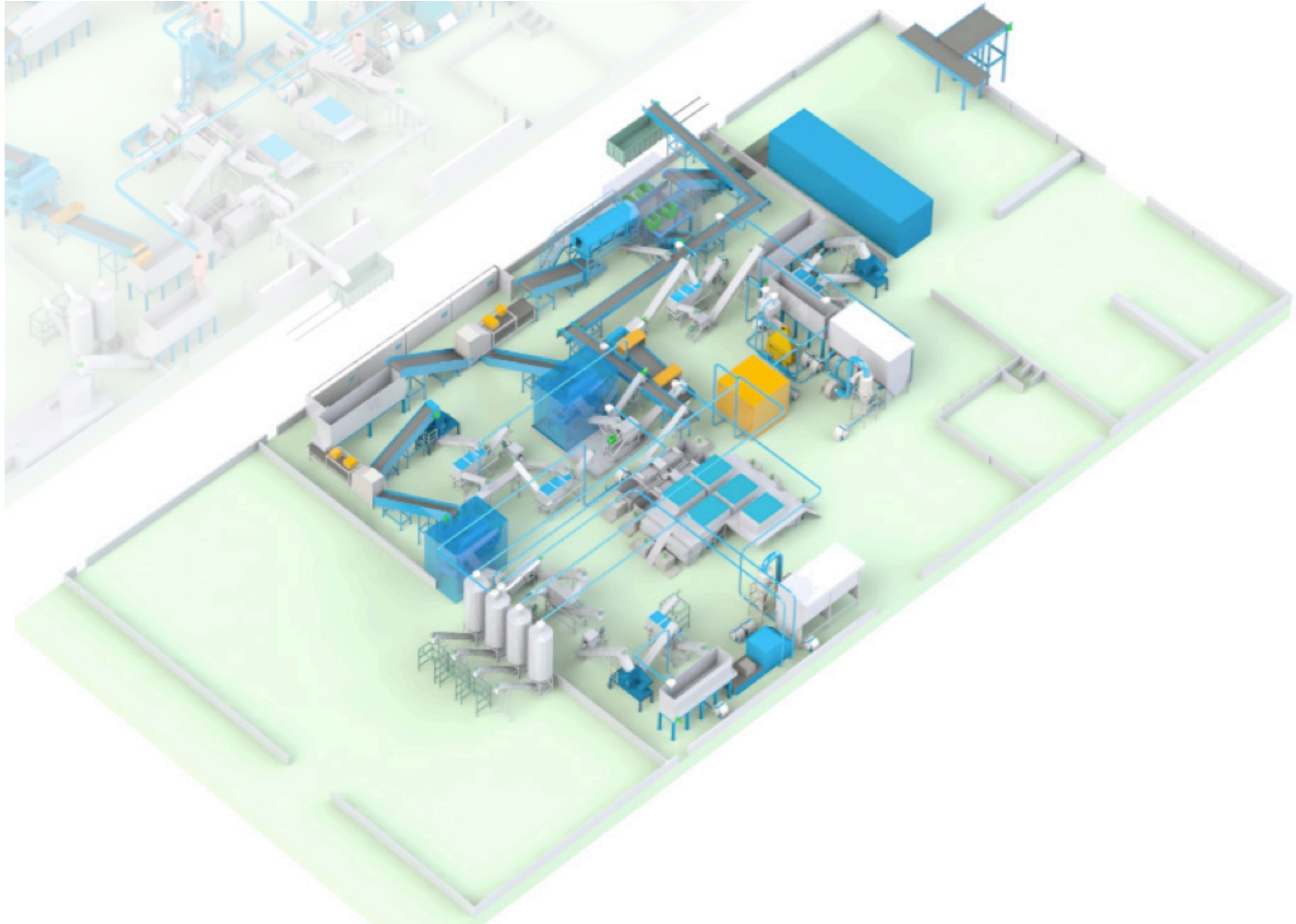


Jelly Cable: 1 ton/hour

Post Consumer Waste



PE/PP from separated post consumer waste: 5 ton/hour



PE/PP from separated post consumer waste: 5 ton/hour

