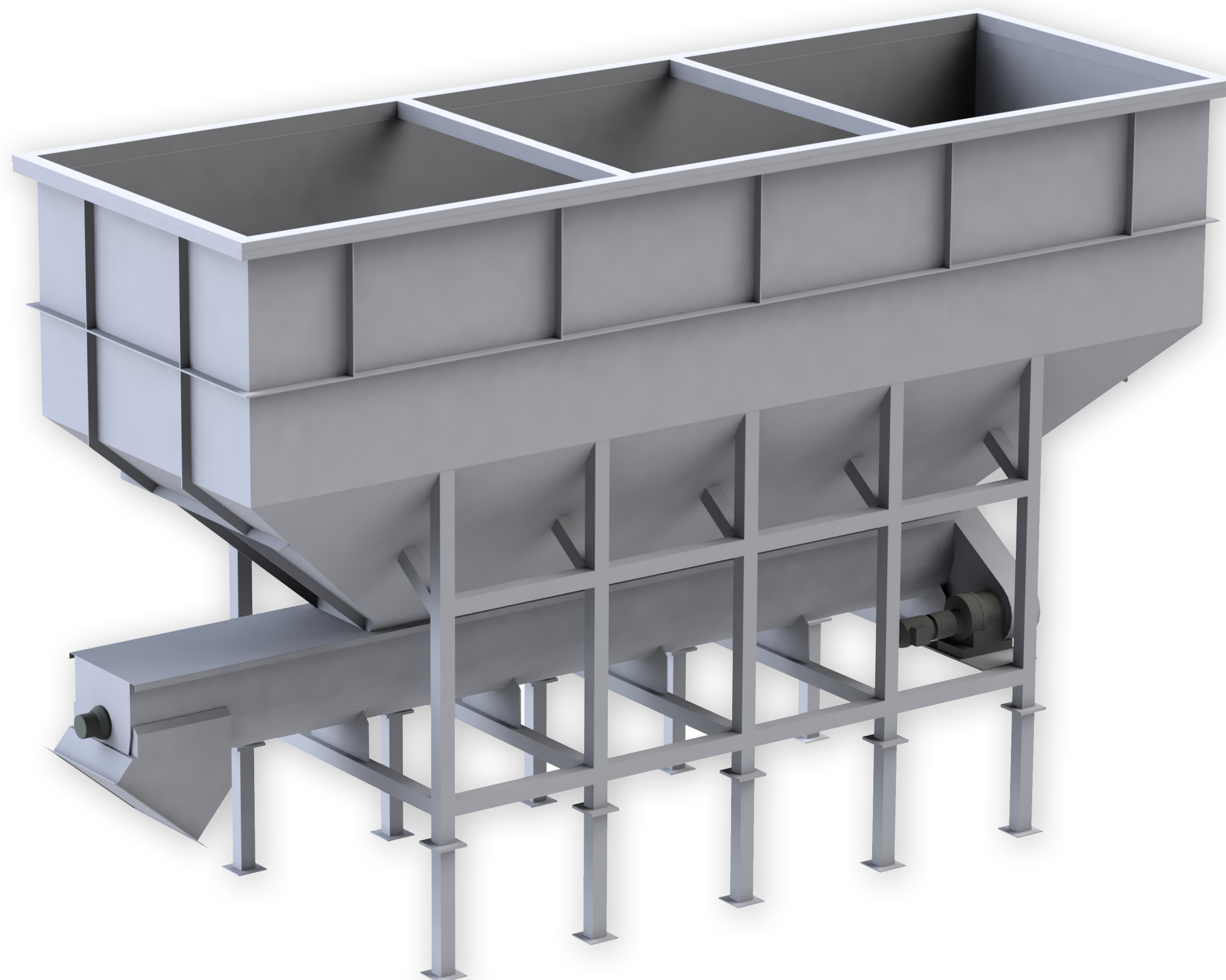




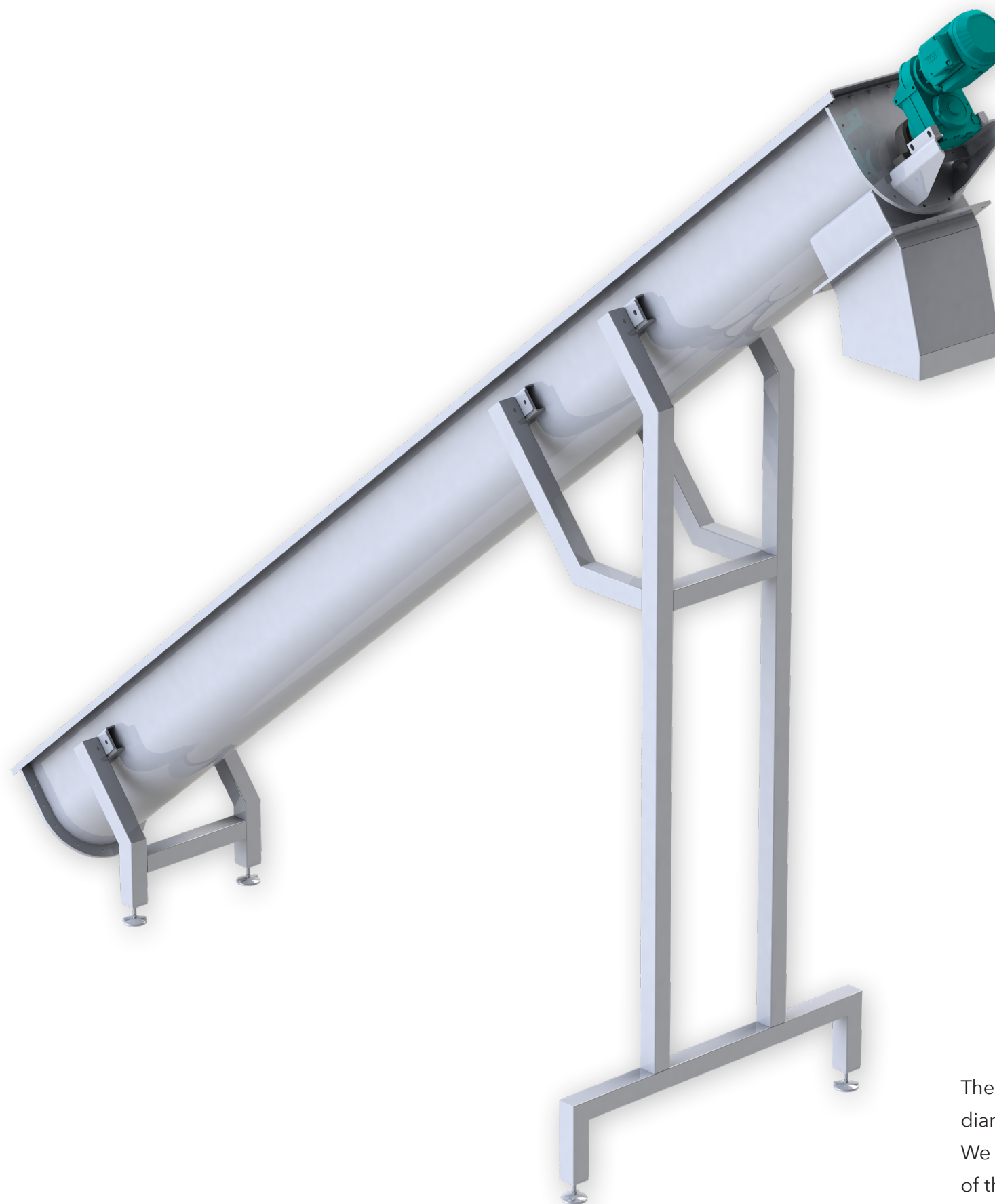
Single machines
and spare parts



The **In Feed Bunker** is built in a range from 3 to 15 cubic meters. We can adapt the specifications for better reach the expectations of the client.



The **Belt conveyor** is built in a range from 500mm to 1500mm wide. We can adapt the specifications for better reach the expectations of the client.

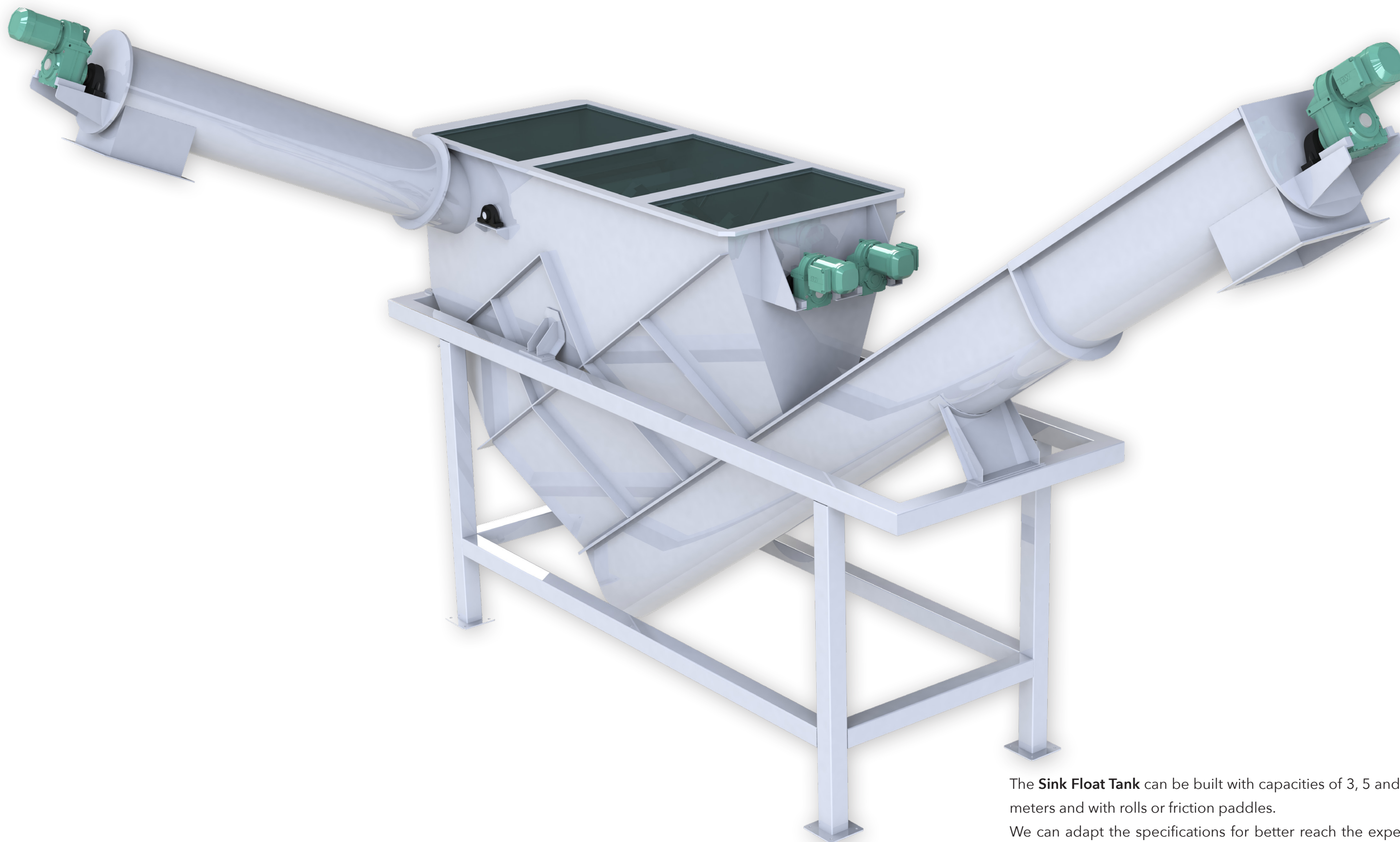


The **Screw conveyor** is built in a range from 300mm to 800mm diameter, with a maximum* of 6m long.
We can adapt the specifications for better reach the expectations of the client.

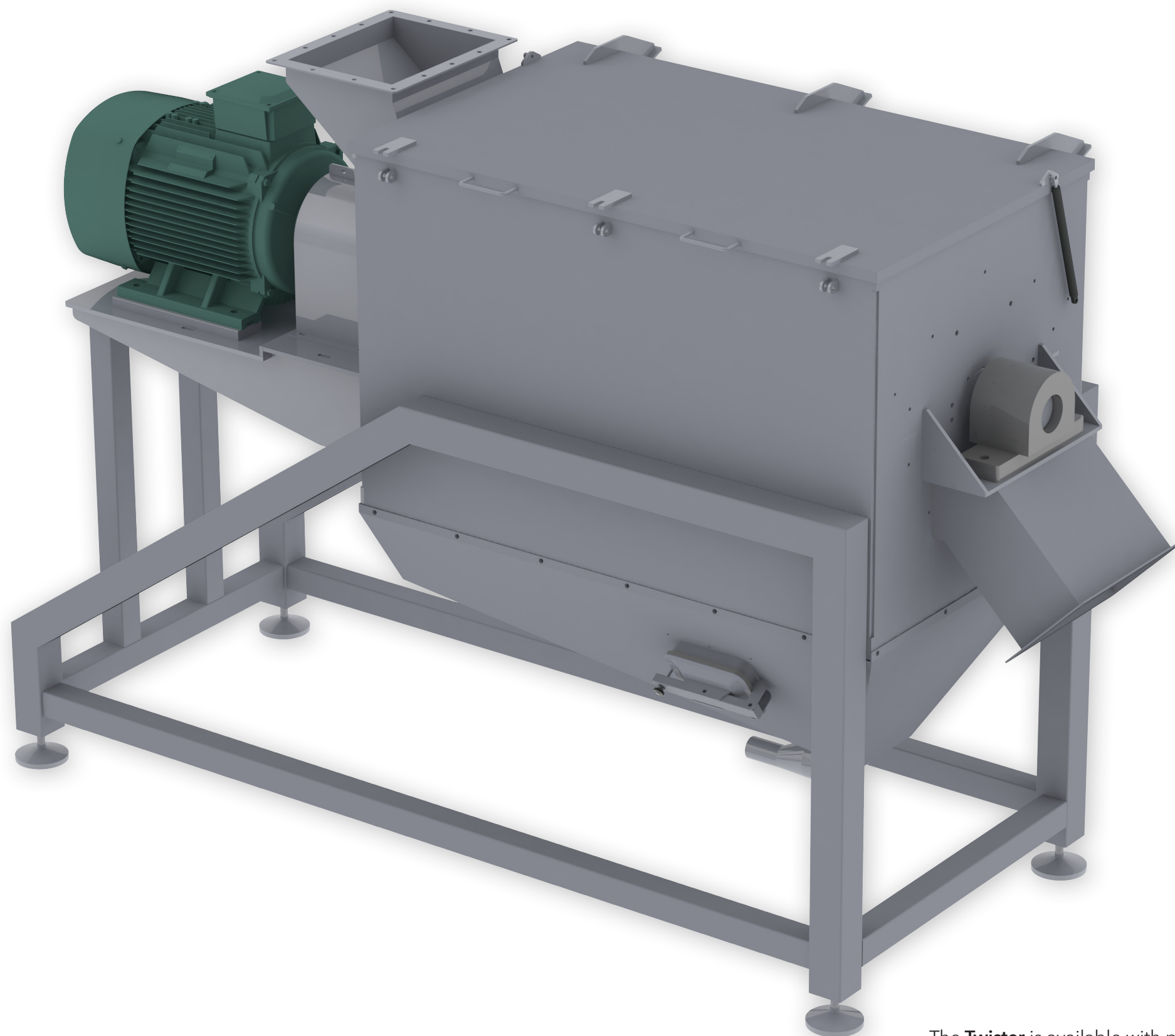




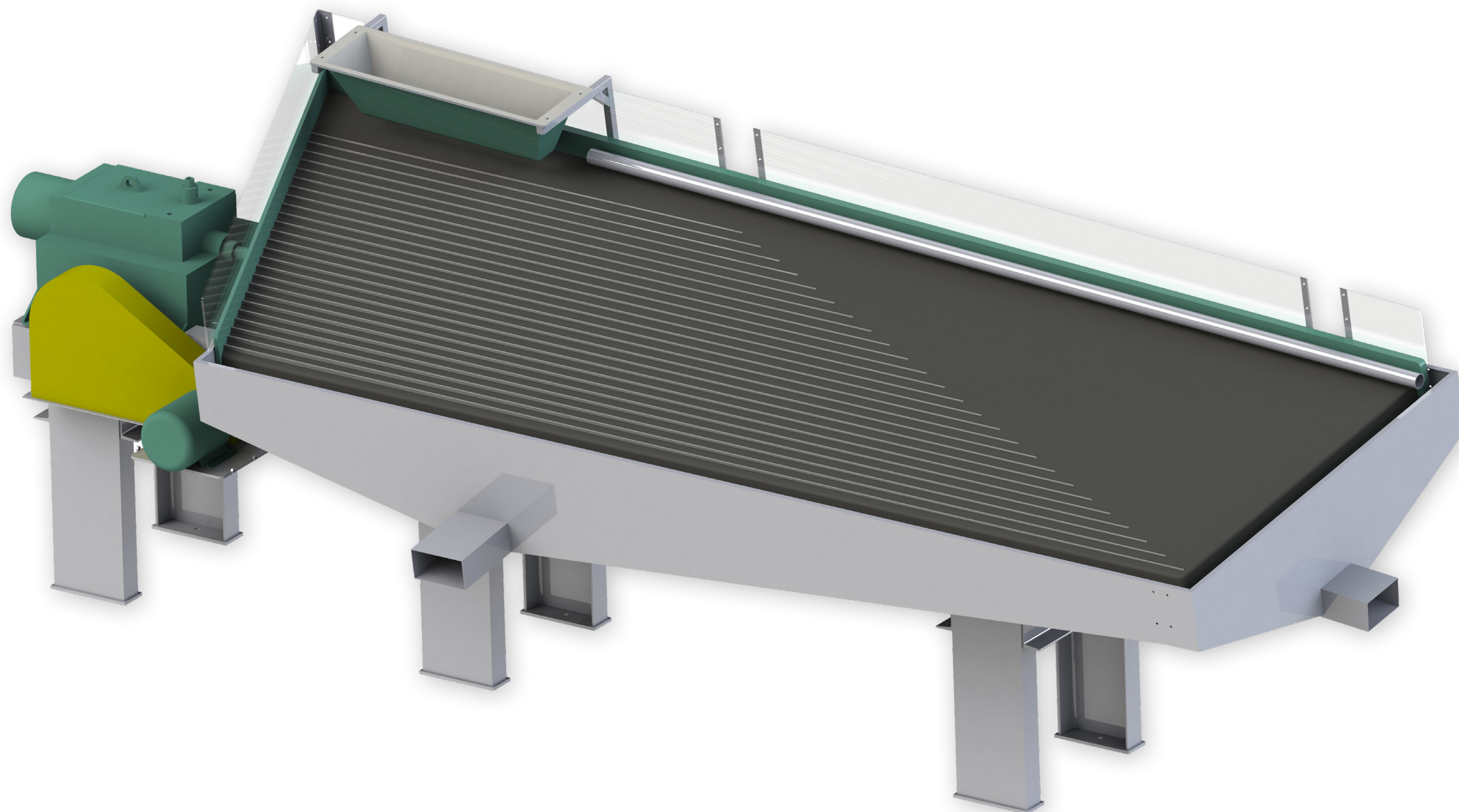
The **Shredders** can be built with two or four shafts and with different amount of blades. We can adapt the specifications for better reach the expectations of the client.



The **Sink Float Tank** can be built with capacities of 3, 5 and 7 cubic meters and with rolls or friction paddles. We can adapt the specifications for better reach the expectations of the client.

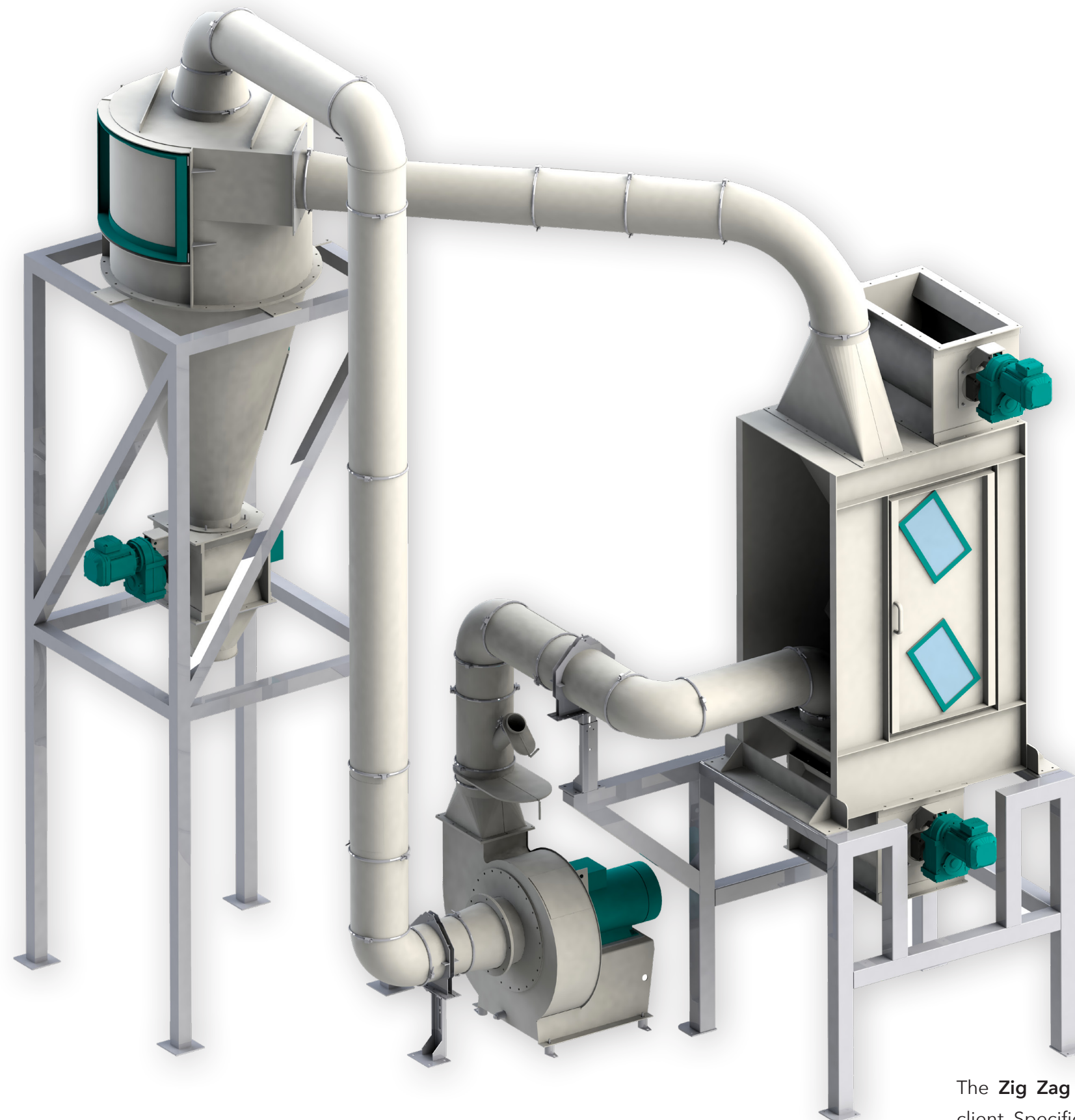


The **Twister** is available with powers of 22, 37, 55 and 75Kw.
We can adapt the specifications for better reach the expectations of the client.

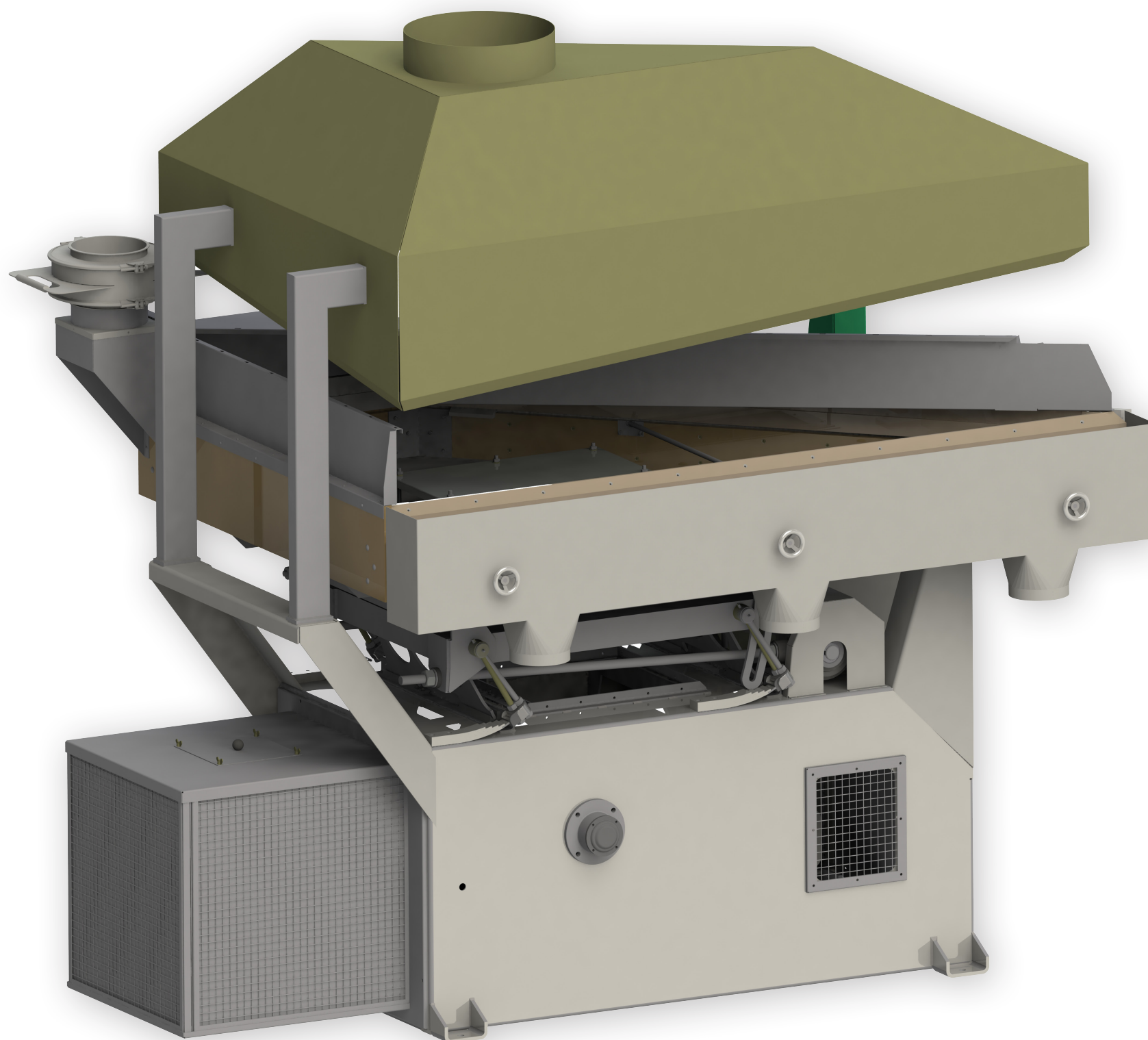


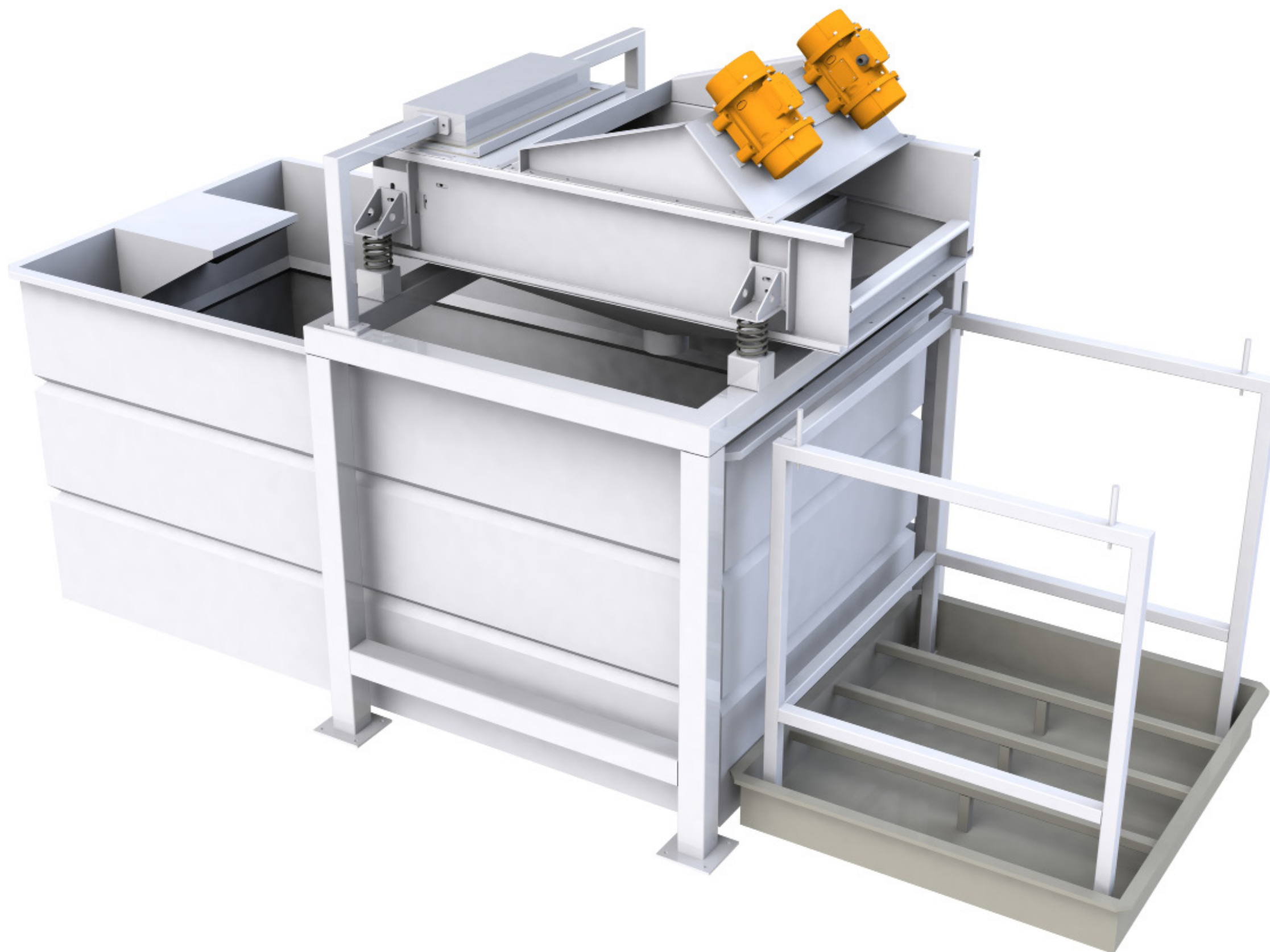
The **Water Table** can process 2,5 ton per hour depending of the kind and size of material.

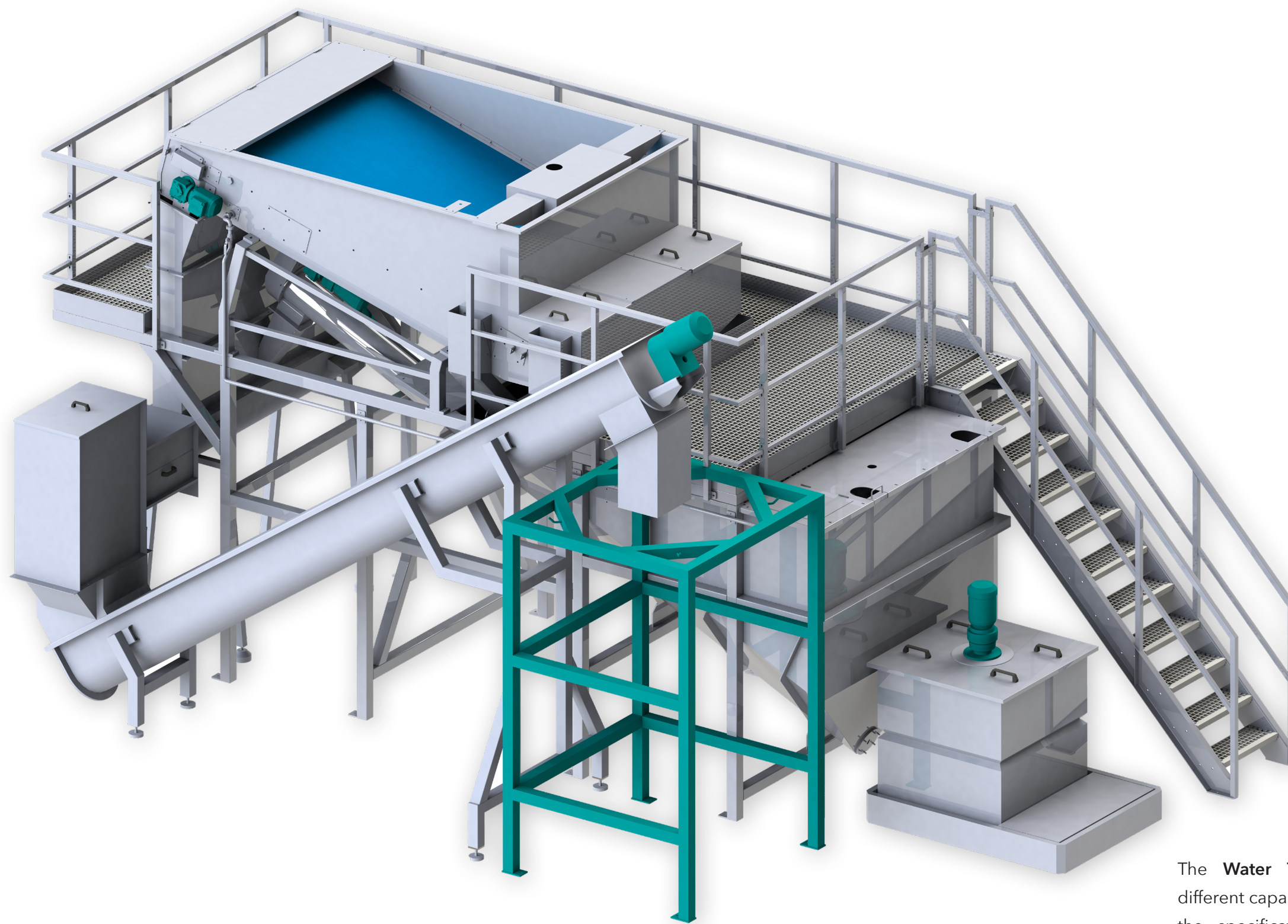
We can adapt the specifications for better reach the expectations of the client.



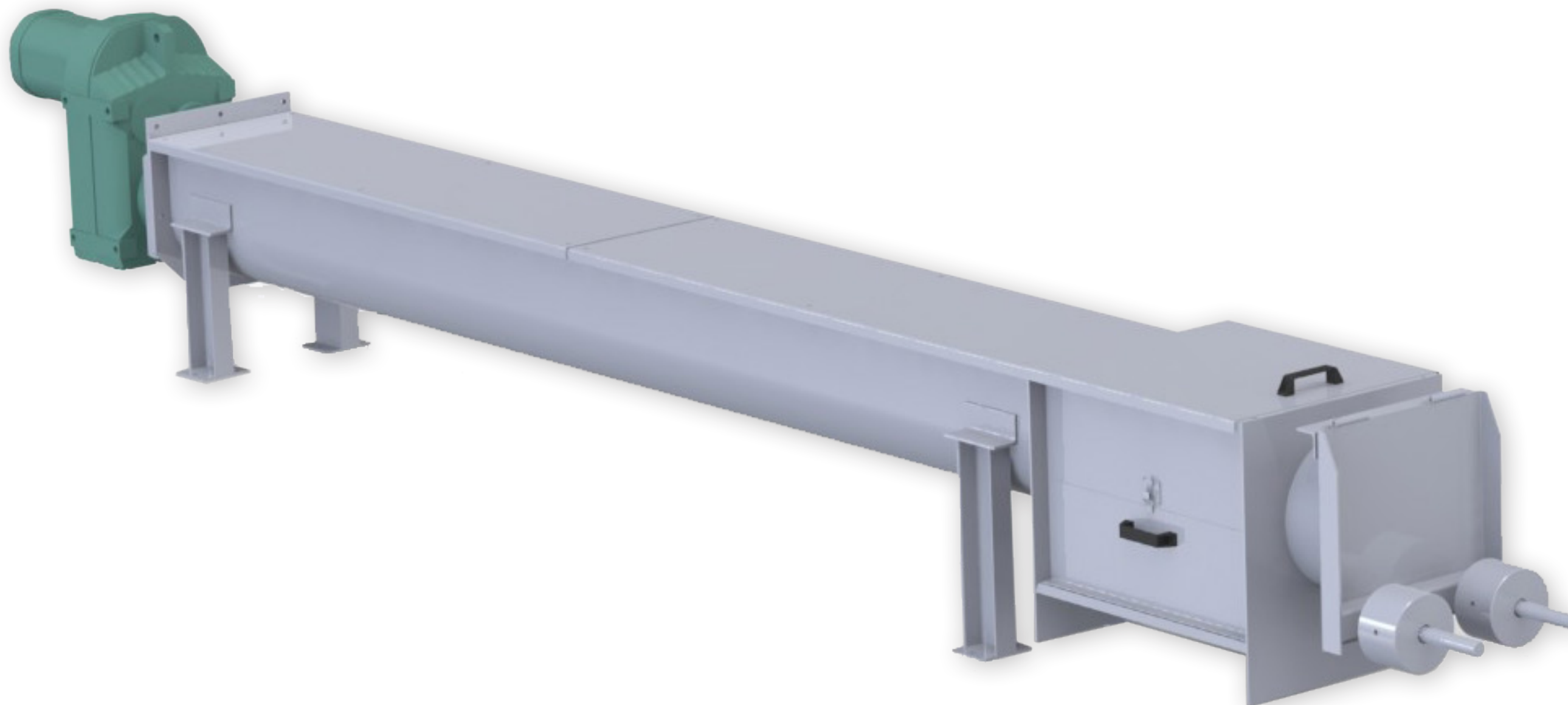
The **Zig Zag** is bespoke for covering the necessities of the client. Specifications depends on material and quantities to be processed.

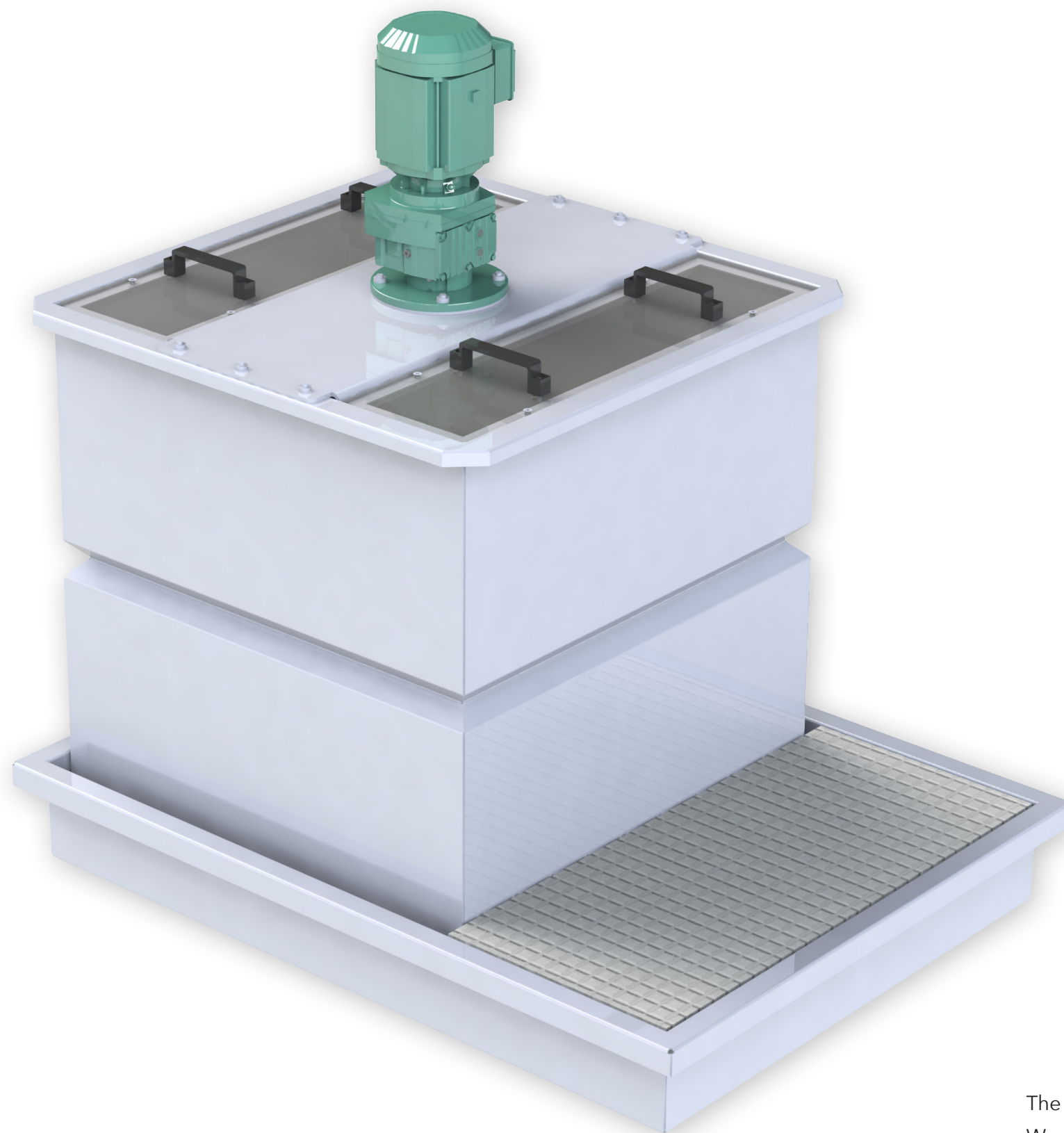






The **Water Treatment** is built with 2 different capacities and sizes. We can adapt the specifications for better reach the expectations of the client.





The **Mixer** is built with an standard capacity of 1m3.
We can adapt the specifications for better reach the expectations
of the client.



The **Silo** is bespoke for covering the necessities of the client.
Different shapes, sizes, with or without conveyors.
We can adapt the specifications for better reach the expectations
of the client.



Twister Screen



Moving Blade



Static Blade

Blades



Tungsten carbide layer



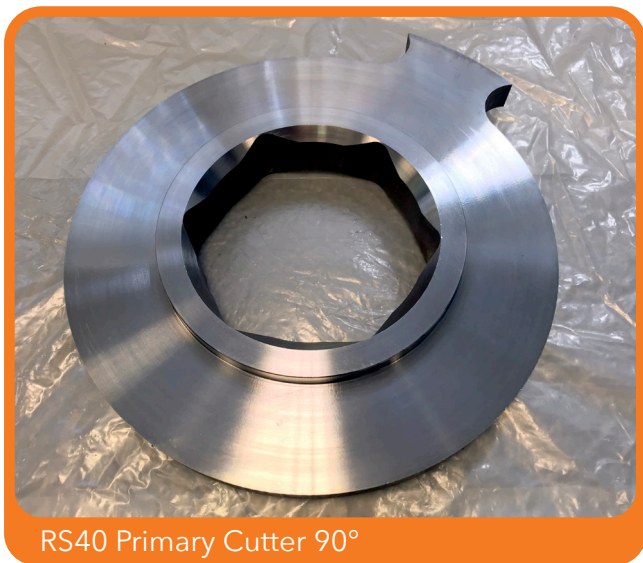
Twister Paddles



Manganese Steel



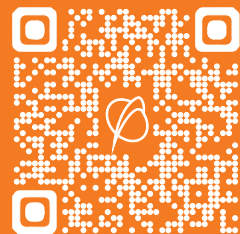
Stainless Steel



Cutters

| Product | Code | Machine | Material |
|---------|-------------------|---------------|------------------|
| Paddle | HTW22P-SS | Twister 22 | Stainless Steel |
| Paddle | HTW22P-MS | Twister 22 | Manganese Steel |
| Paddle | HTW22P-TC | Twister 22 | Tungsten Carbide |
| Paddle | HTW55P-SS | Twister 55 | Stainless Steel |
| Paddle | HTW55P-MS | Twister 55 | Manganese Steel |
| Paddle | HTW55P-TC | Twister 55 | Tungsten Carbide |
| Screen | HTW22SCSS-T4H2CC4 | Twister 22 | Stainless Steel |
| Screen | HTW22SCSS-T4H2CC6 | Twister 22 | Stainless Steel |
| Screen | HTW22SCSS-T4H3CC6 | Twister 22 | Stainless Steel |
| Screen | HTW55SCSS-T5H2CC4 | Twister 55 | Stainless Steel |
| Screen | HTW55SCSS-T5H2CC6 | Twister 55 | Stainless Steel |
| Screen | HTW55SCSS-T5H3CC6 | Twister 55 | Stainless Steel |
| Screen | HTW55SCMS-T6H4CC6 | Twister 55 | Manganese Steel |
| Cutter | HRS40PC00 | Shredder RS40 | Stainless Steel |
| Cutter | HRS40PC90 | Shredder RS40 | Stainless Steel |
| Cutter | HRS40SC | Shredder RS40 | Stainless Steel |
| Cutter | HRS60PC00 | Shredder RS60 | Stainless Steel |
| Cutter | HRS60PC90 | Shredder RS60 | Stainless Steel |
| Cutter | HRS60SC | Shredder RS60 | Stainless Steel |
| Knife | HMB | Grinder | Stainless Steel |
| Knife | HSB | Grinder | Stainless Steel |





www.hermion.nl
info@hermion.nl
www.linkedin.com/company/hermion